

SEE YOUR
FUTURE
IN A
FLASH

KENT STATE
UNIVERSITY



Apply now

WWW.KENT.EDU/ADMISSIONS/APPLY

*Find us
on the*



A Better Tomorrow Starts With Bold Leaders

Kent State is a public research university with 8 campuses located throughout northeast Ohio and study sites in New York City, New York; Florence, Italy; and Geneva, Switzerland.

Get ready to surround yourself with world-class faculty who serve as researchers and mentors. When you join Kent State, you join a global community of alumni leaders in business, healthcare, fashion, flight, education and beyond, and students unafraid to break the mold and push boundaries.



Join Kent State's Diverse Student Population

Kent State University enrolls more than 38,000 students including approximately 1,700 international students from nearly 100 countries.

Everyone is welcomed – and embraced – for who they are and supported to become all that they can be. We encourage you to keep an open mind, step outside your comfort zone, engage in challenges and speak with a meaningful voice. We passionately believe that what makes each of us different makes us powerful when we work together.



A World of Opportunities Awaits You, Connect with them at Kent State

Kent State University has exceptional resources, including corporate partnerships, experienced faculty and state-of-the-art facilities and equipment that create a world of opportunities for our students.

Inside **11** Colleges, Kent State offers more than **360** academic programs at the associate, bachelor's master's and doctoral levels



Picture Yourself Here
Watch our videos

200+
Study Abroad Opportunities in over 60 Countries

400+
Clubs and Student-run Organizations

19
Varsity Athletic Teams at the Division 1 Level

23
Residence Halls and Living Communities

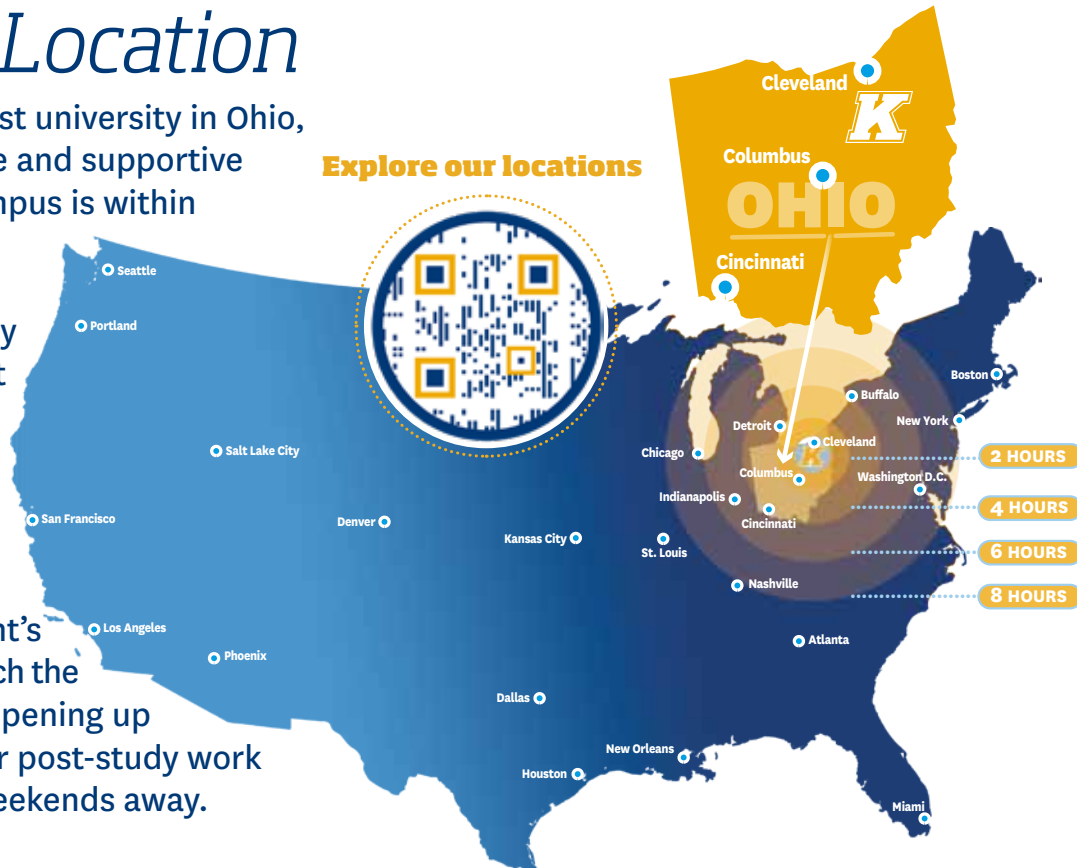
“What I loved the most about Kent State was getting to meet and study with people from all over the globe. Every day I discovered something else from a different culture by interacting with staff, professors, and students. I chose to study a master’s in the United States to improve my career prospects and develop new skills in my profession. I was searching for a school that had a balance between technique, creativity, theory, and innovation—Kent State provides the perfect balance between all of those.”

~ Maíra Furtado Faria from Brazil,
Master’s degree in architecture from Kent State University.

The Golden Location

Kent State is the third largest university in Ohio, providing a welcoming, safe and supportive environment. Our main campus is within walking distance of Kent, a lively student town, and you'll find 3 big cities nearby for even more entertainment or internship options.

Looking for peace and quiet? We are also a stone's throw away from Cuyahoga Valley National Park! And with Kent's central location, you can reach the East or West Coast easily, opening up even more opportunities for post-study work experience or simply fun weekends away.



Experience all 4 seasons in Ohio

Your Safety is Our Priority

Kent State is one of the safest campuses in the U.S. as ranked by the Council for Home Safety and Security, and as reported by the Consortium for Higher Education Campus Crime Research and FBI Uniform Crime Statistics. Campus safety resources are available 24/7 including Police Services, Security Aides and Escorts, Key Card Entry Systems, and Flash Alerts, our emergency text notification system.

Kent State has worked extremely hard to keep students safe on campus throughout the COVID-19 pandemic via daily dashboard updates, on-campus vaccination programs and rigorous safety measures. Meanwhile, our University Health Services provides quality healthcare, treatment, and psychological counseling.

“I originally chose to study in the U.S. because I wanted to experience its superior educational system and to have the opportunity to put my theoretical knowledge to practice. I was attracted by opportunities to engage in undergraduate research, and the care that Kent State shows for its international students.”

~ Tuan Kiet from Vietnam, Chemistry with a concentration in biochemistry/pre-pharmacy

The Best Investment for Your Future

We want to help you achieve your academic goals, and that means providing you with a high quality educational experience that's also affordable. Delivering both prestige and value, at Kent State University, we have a variety of financial resources and part-time work opportunities available on campus.



“I was able to work on campus as a graduate assistant, take part in internships, and get involved in student organizations, all of which helped me build a community at Kent State.”

~ Winnie Bush from Nigeria, Master's in Higher Education Administration and Student Affairs



Tuition fees and financial aid



Our cost of living is 10% below the national average, making Northeast Ohio one of the most affordable places to live in the U.S.

- **96%** of first-year students receive financial assistance
- **\$66 million** in scholarships given to first-year students
- **\$400+** million in financial aid awarded each year to over 30,000 students
- **5000+** student employees on campus

Personalized Career Services

You'll be able to gain real-world experience way before you graduate thanks to our robust internship programs via Curricular or Optional Practical Training (CPT and OPT).

Kent State's Career Exploration and Development Office has plenty of resources to help you to pursue a rewarding future such as on-campus student employment, internships, career counseling, job search support, résumé writing services, weekly workshops and more.

Join Our Global Alumni Family

Your Kent State degree will provide you with global connections and countless career opportunities.

Success After Graduation



270,000+

Alumni worldwide

90%

of 2023 graduates were employed or in further education within 12 months

“Kent is a wonderful place for professional development and the teachers are accessible.” In addition to being a safe place to live, I appreciate the size of the university. It is not too small or too big. For me, it is just the right size.”

~ Mother and daughter from Kyrgyzstan, Duo Chynara and Eldona Ryskulova. Between them, they've earned three degrees from Kent State!



Award-winning Student Support – Every Step of the Way

Our friendly advisors provide the help you need to adapt to a new environment and get assistance with your studies.

Many of Kent State's free coaching and support services have won multiple awards for the help we provide, such as the Innovation in Advising Award from NACADA in 2021.



Explore All Our Campus Resources



There are numerous academic resources that you can take advantage of throughout your time with Kent State University.

- Tutoring
- Peer mentoring
- Advising drop-ins
- Study groups
- Language or conversation clubs
- Personal wellbeing

Conditional Admissions and English Language Support

If you need extra academic support to meet our language requirements, you can take English language classes at our ESL Center before entering your program.

Want to kickstart your university experience and fine tune your language skills? Join our Summer Institute for intensive English and Culture classes.



“If you have a problem, Kent State will help you. I don't feel like I'm here without family because the international office (the Office of Global Education) is like my family. They help with department and immigration issues, but they're also there for me if I have a personal problem. They make everything easier.”

~ Fatema Nafa from Libya, along with her husband and their three children came to Kent knowing only a limited amount of English. They enrolled as ESL (English as Second Language) and PhD students.

Check Our Language Requirements



SEE YOUR FUTURE IN A FLASH

KENT STATE
UNIVERSITY



Let's begin your journey to Kent State together!
Use our site to find international admissions counselors
and recruiters in your region.

WWW.KENT.EDU/ADMISSIONS/INTERNATIONALCOUNSELORS



Our global, multilingual team provides free advice and individualized attention to you throughout the university decision-making process. Contact us any time to ask questions or receive personal assistance with your application and our admissions procedures.

Find us on the common app, view admissions requirements and apply now

WWW.KENT.EDU/ADMISSIONS/APPLY



KENT STATE UNIVERSITY | OFFICE OF GLOBAL EDUCATION | WWW.KENT.EDU/GLOBALEDUCATION

625 Loop Road, 106 Van Campen Hall | Kent OH 44242 USA | +1-330-672-7980 | INTLADM@KENT.EDU