

# Using the de-soldering station

CREATED BY DI CREW

# Hakko FM-204

[Full user manual](#)

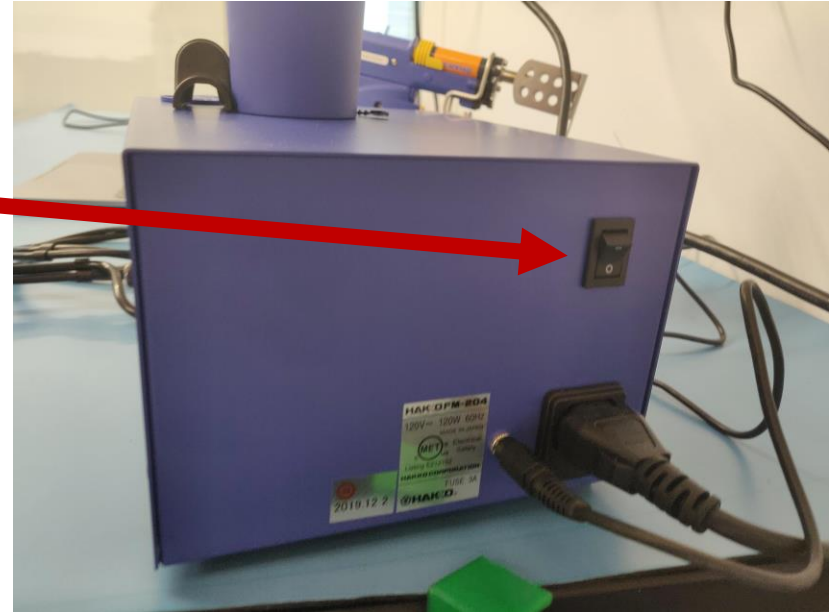
## Table Of contents:

- General Use Procedures
  - Powering on the Station
  - Adjusting Temperature
  - Tinning the Tip
  - General Safety
  - Using the Station
- General maintenance items
  - Filter replacement
  - Nozzle replacement

# General Use Procedure

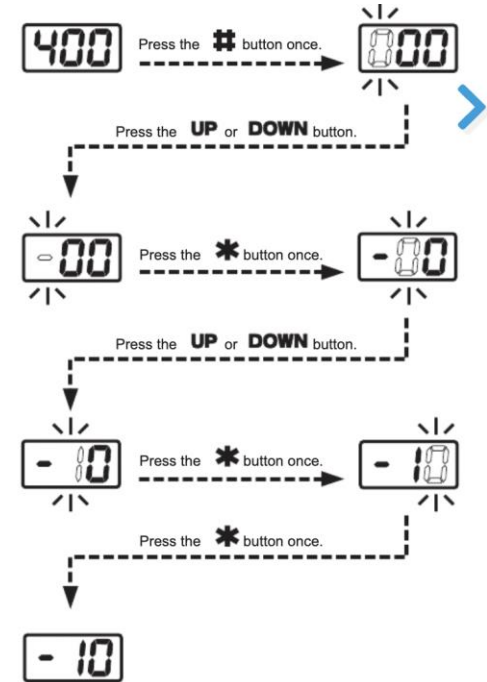
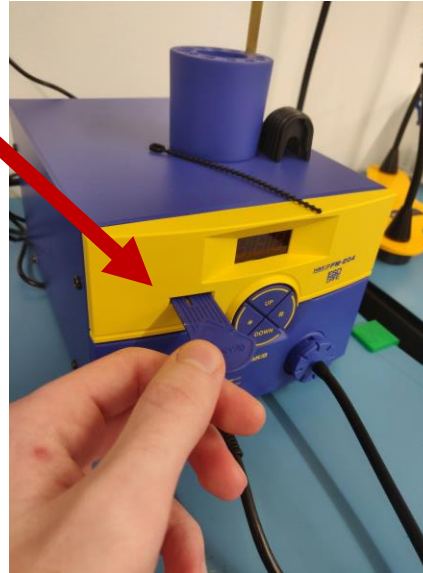
# Powering on the Station

- Before turning the device on make sure that the de-soldering gun is placed in its holder and not in contact with anything.
- When ready, locate the switch on the back right of the machine and turn it to the on position.
- Once switched to the on position, the tip will begin heating immediately.



# Adjusting Temperature

- To adjust the tip temperature first insert the the control card into the slot to the left of the central button cluster
- Then change each number to the desired temperature using the # to confirm the selection



# Tip Care

- Before using the station to ensure that the tip has a shiny metallic look.
- If the tip has a dull grey appearance that means the tip is oxidized and will not transfer heat effectively.
- Before melting any solder please refer to the [safety slide](#)
- To "Tin" the tip first get the tip up to temperature and give it some solder. The solder has a hollow core that contains a flux which cleans oxidation.
- After wetting the tip with solder use the metallic wool named 599-b to clean the tip
- Retin with solder after use.



# Safety

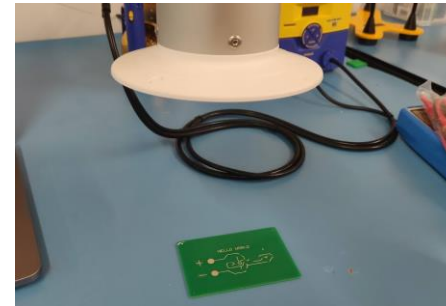
Before melting any solder ensure that the fume scavenging system is:

1. Turned on (on/off switch near door)
2. The valve is open
3. The collector is placed above the work

**This lab uses 60/40 leaded solder.**

**It is best practice to wash your hands after using leaded solder.**

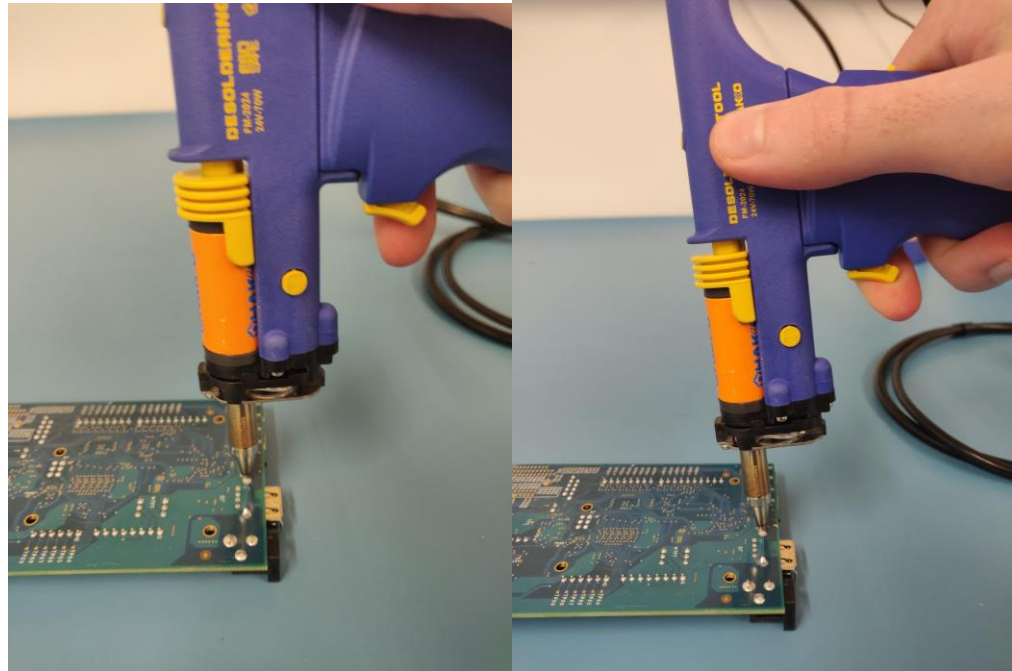
**Avoid touching your eyes and do not eat anything that has touched the blue mats.**



# Using the station

After setting up the station in the previous steps do the following to de-solder your work.

1. Align nozzle over desired solder
2. Wait until the solder liquefies then wait another second
3. Press the trigger to turn on the vacuum and hold until solder is gone





General maintenance

# Changing the Filter

To change the solder filter, do the following:

1. Pull back yellow clamp
2. Remove filter
3. Replace filter
4. Ensure the clamp is placed back in the correct orientation.



# Replacing the Nozzle

**To change the solder filter, do the following:**

1. Wait until nozzle is completely cooled
2. Affix nozzle remover over nozzle
3. Pull to remove the nozzle
4. Replace nozzle by inserting a new one.

