

Using the Hakko FX-951 soldering station

CREATED BY DI CREW

Hakko FX-951

[Full user manual](#)

Table Of contents:

- General Use Procedures
 - Powering on the Station
 - Adjusting Temperature
 - Tinning the Tip
 - General Safety
 - Using the Station
- General maintenance items
 - Replacing tip.

General Use Procedure

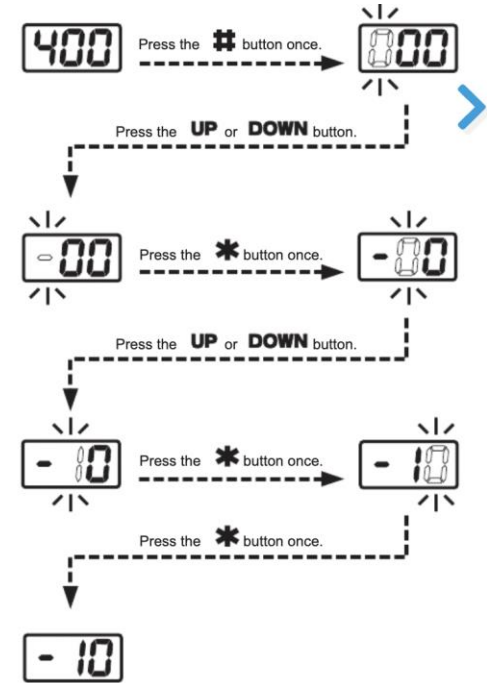
Powering on the Station

- Before turning the device on make sure that the soldering iron is placed in its holder and not in contact with anything.
- When ready, locate the switch on the top of the machine and turn it to the on position.
- Once switched to the on position, the tip will begin heating immediately.



Adjusting Temperature

- To adjust the tip temperature first insert the the control card into the below the central button cluster
- Then change each number to the desired temperature using the # to confirm the selection



Tip Care

- Before using the station to ensure that the tip has a shiny metallic look.
- If the tip has a dull grey appearance that means the tip is oxidized and will not transfer heat effectively.
- Before melting any solder please refer to the [safety slide](#)
- To “Tin” the tip first get the tip up to temperature and give it some solder. The solder has a hollow core that contains a flux which cleans oxidation.
- After wetting the tip with solder use the metallic wool named 599-b to clean the tip
- Retin with solder after use.



Safety

Before melting any solder ensure that the fume scavenging system is on

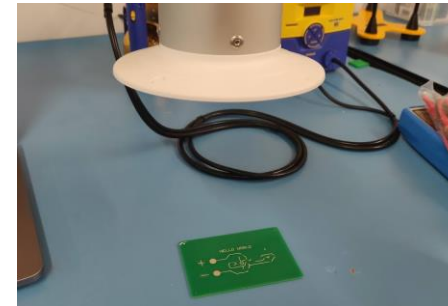
1. Turned on (on/off switch near door)
2. The valve is open
3. The collector is placed above the work



This lab uses 60/40 leaded solder.

It is best practice to wash your hands after using leaded solder.

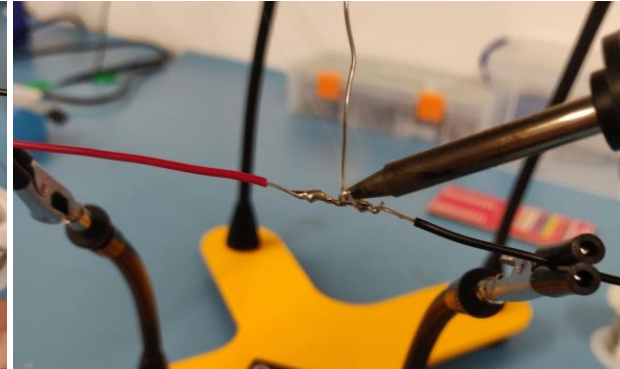
Avoid touching your eyes and do not eat anything that has touched the blue mats.



Using the station

After setting up the station in the previous steps do the following to de-solder your work.

1. Wait for tip to reach desired temperature
2. Hold the tip to the work and apply solder
3. Clean tip once work is completed.

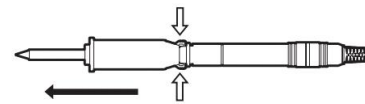


General maintenance

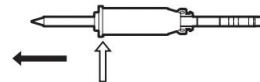
Replacing the tip

To change the tip do the following:

1. Wait until nozzle is completely cooled
2. Pinch black tabs at the bottom of the green grip
3. Pull to remove the tip from the grip
4. Replace nozzle by inserting a new one.



Remove the tip from the connector while pressing this part.



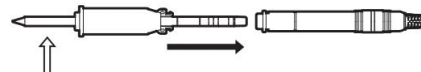
Hold the front part of the sleeve assembly to remove the tip.



Hold this part to insert the tip into the sleeve assembly.

CAUTION

When holding the head of the tip, there is a danger of burn. Be sure to use the heat-resistant pad.



Hold this part to insert the tip into the connector.