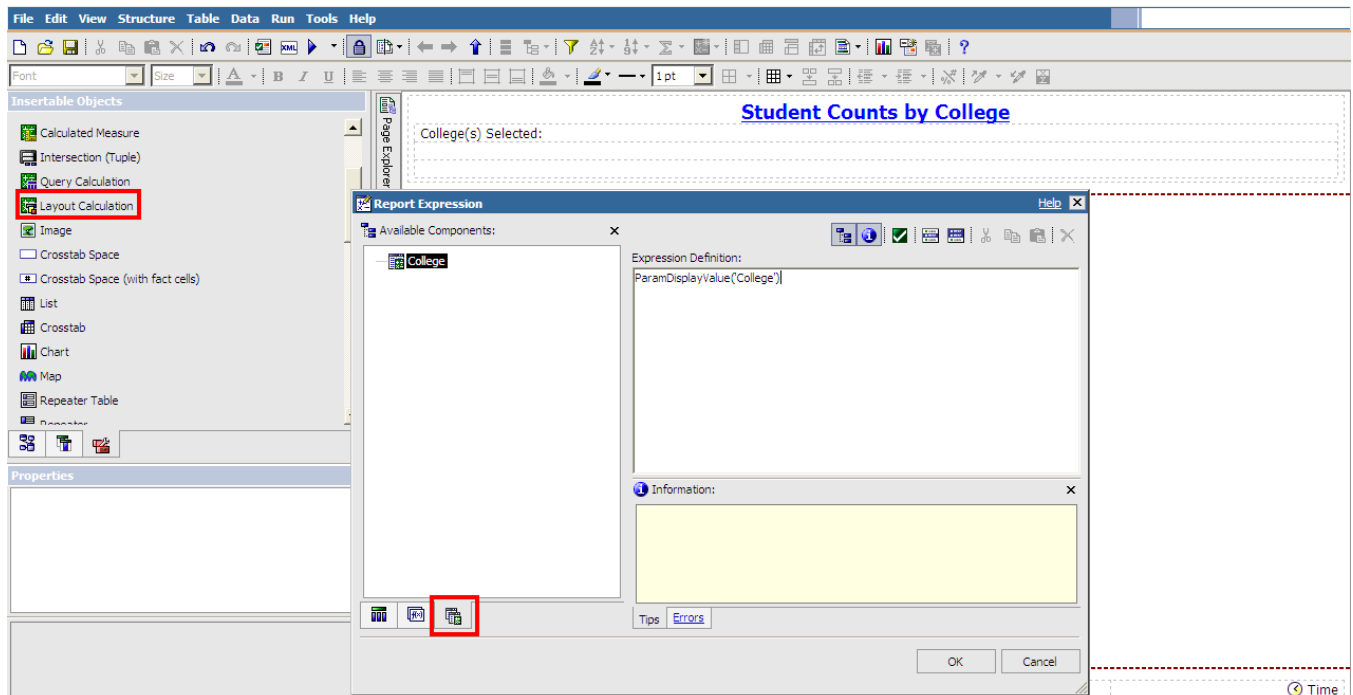
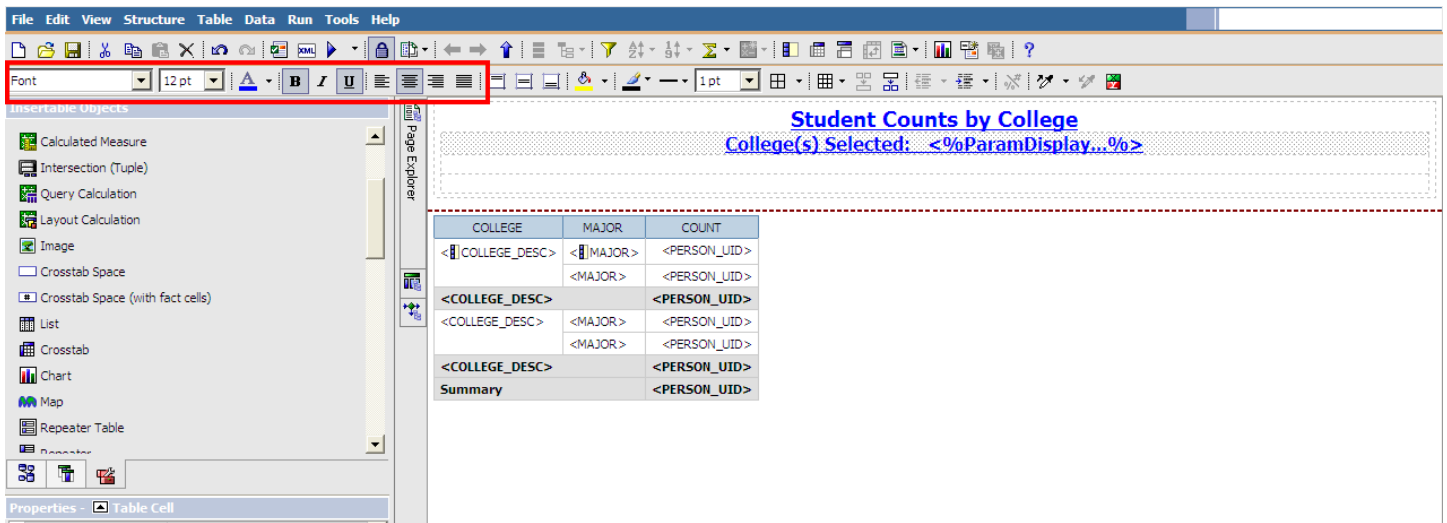


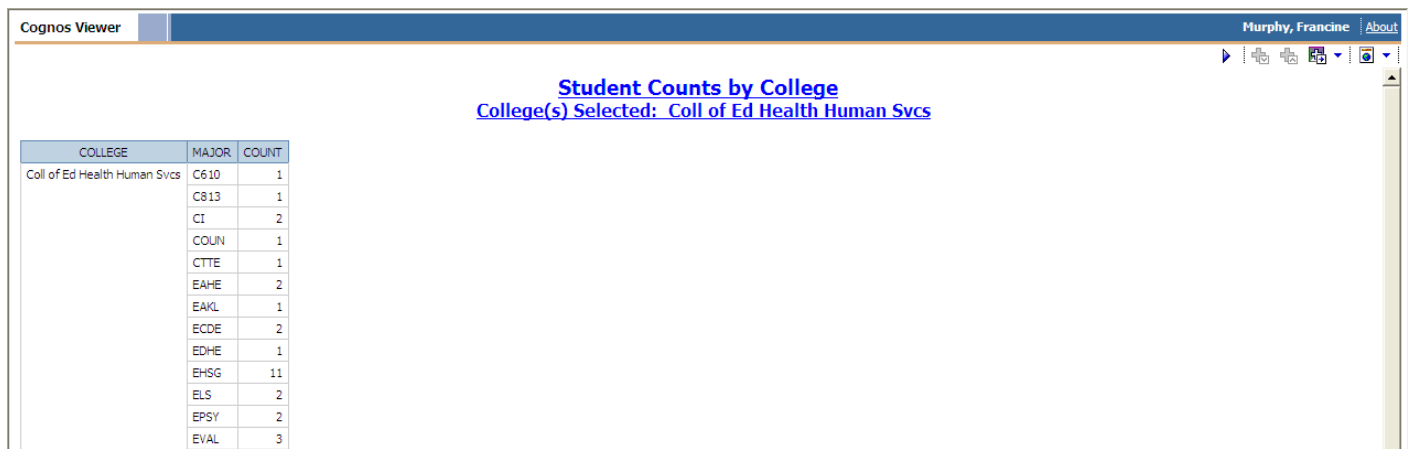
8. Drag and drop the **Text** item into the top row of the table
9. The **Text** box will open
10. Enter the text to be displayed - remember to add a space after the text
11. Click the **OK** button



12. From the **Insertable Objects Pane**, drag and drop the **Layout Calculation** item to the right of the inserted text in the report heading.
13. The **Report Expression** box will open
14. Click the **Parameters Tab** to display the available components
15. Double click on the parameter to display in the heading
16. The parameter will populate in the **Expression Definition** field
17. Click the **OK** button



18. Format the additional title information using the **Formatting Toolbar**



19. Run the report to verify that the report title is formatted correctly