



ASHTABULA

THIS IS

OUR STORY



ON THE SHORES OF
LAKE ERIE

ON THE
BRINK OF
TOMORROW





WELCOME TO OUR STORY.
HERE YOU'LL FIND OUT

WHO WE ARE
WHAT YOU CAN BECOME
and
HOW **WE'LL HELP YOU**
GET THERE



WE **ARE**



**PART OF ONE OF THE LARGEST
UNIVERSITY SYSTEMS IN OHIO,
KENT STATE UNIVERSITY AT ASHTABULA
HAS ALL THE RESOURCES OF A MAJOR
UNIVERSITY WITH A HOMETOWN FEEL.**

OUR STUDENTS FULFILL AN OVER 55-YEAR **TRADITION** WHEN
THEY BECOME NURSES, BUSINESS OWNERS, COMPUTER
TECHNOLOGISTS, RESPIRATORY THERAPISTS, EDUCATORS,
ENTREPRENEURS, INNOVATORS, DREAMERS AND LEADERS.





OUR FACULTY

EDUCATORS • INNOVATORS • EXPERTS • ADVOCATES



Joseph Kuvshnikov, Ph.D.

Associate Professor ► Accounting
Dr. Kuvshnikov's students completed a research project and presented their findings overseas in Poland



Donald Driscoll, Ph.D.

Associate Professor ► Physics
Dr. Driscoll has been helping our students survive those challenging physics classes for a decade.



Ann Abraham, Ph.D.

Associate Professor ► Chemistry
Dr. Abraham was a Kent State 2013 Distinguished Teaching Award recipient



Tamra Courey, D.N.P.

Associate Professor ► Nursing
Dr. Courey took nursing students to the Dominican Republic to learn about third-world health issues



Deborah Bice, Ph.D.

Associate Professor ► English
Dr. Bice teaches the old favorites and the new, with course topics ranging from Shakespeare to "The Maze Runner"



Brian Castellani, Ph.D.

Professor ► Sociology
Dr. Castellani was named one of only five Systems Science Scholars in the United States

»»»»»»»» Student advocates in every sense of the word, Kent State Ashtabula's professors are committed to a distinctive blend of teaching and learning, research and creative excellence. They are real-world tested within their fields and in the community.



Welcome to ASHTABULA



99,811
Ashtabula County
population

18,673
Ashtabula City
population

2,200
Kent State Ashtabula
Golden Flashes

**NO MATTER WHERE YOU ARE FROM
KENT STATE ASHTABULA FEELS LIKE HOME**

49% of students from Ashtabula County

28% of students from surrounding counties

Students come from **28 states** and **4 countries**

Comprised of 3 cities, 7 villages and 28 townships, Ashtabula County has it all. Whether you prefer a more rural setting, cityscapes or the suburbs, we have what you are looking for all within 60 minutes of campus.



CHOOSE A
PURPOSE
NOT JUST A
MAJOR

ACADEMICS

Kent State Ashtabula offers a student-first approach to education with faculty and staff who are dedicated to the success of our students. *Here, you will get a quality education at an affordable price.*

VALUE

Why is Kent State Ashtabula such a great academic value?

The **8th** lowest tuition for a 4-year public school in Ohio

The first – **and only** – 4-year public university in Ashtabula County

Reduced tuition rate for students in neighboring Pennsylvania and West Virginia counties

16 associate degrees and 11 Bachelor's degrees available, or start any KSU degree program here

Prestige

44 faculty members are published authors

3 Kent State University Distinguished Teacher Award recipients teach on our campus

Over 50% of our STEM faculty are women

Home of the state's only wine degrees: Viticulture and Enology

Anatomy & Physiology students excel with access to the only cadaver lab between Cleveland and Erie.

14:1

Student-Faculty Ratio

33

Undergraduate degrees & certificates at the Ashtabula campus

280+

Access to over 280 undergraduate degrees through the Kent State system

1st

Kent State Ashtabula offers the nation's first Physical Therapist Assistant program specifically for Athletic Trainers

94%

Pass rate for our nursing students on their national certification exam, the NCLEX

**WE ARE A SMALL CAMPUS
FULFILLING
BIG DREAMS**

MAJORS

and ACADEMIC PROGRAMS



BACHELOR'S DEGREE *programs*

- BUSINESS MANAGEMENT
- COMMUNICATIONS STUDIES
- CRIMINOLOGY/JUSTICE STUDIES
- ENGLISH
- HOSPITALITY MANAGEMENT
- INTEGRATIVE STUDIES
- NURSING
- PSYCHOLOGY
- RESPIRATORY CARE
- SOCIOLOGY
- TECHNICAL AND APPLIED STUDIES



CERTIFICATE PROGRAMS

BUSINESS MANAGEMENT TECHNOLOGY
COMPUTER FORENSICS AND INFORMATION SECURITY
ENTREPRENEURSHIP
HOSPITALITY MANAGEMENT
OFFICE SOFTWARE APPLICATION



ASSOCIATE DEGREE *programs*

- ACCOUNTING TECHNOLOGY
- ARTS
- BUSINESS MANAGEMENT TECHNOLOGY
- COMPUTER TECHNOLOGY
- ENOLOGY
- HUMAN SERVICES TECHNOLOGY
- INFORMATION TECHNOLOGY FOR ADMINISTRATIVE PROFESSIONALS
- JUSTICE STUDIES
- NURSING
- OCCUPATIONAL THERAPY ASSISTANT TECHNOLOGY
- PHYSICAL THERAPIST ASSISTANT TECHNOLOGY
- RADIOLOGIC TECHNOLOGY
- RESPIRATORY THERAPY TECHNOLOGY
- SCIENCE
- TECHNICAL STUDY
- VITICULTURE



OUR STUDENTS LEARN BY

DOING

BEYOND THE CLASSROOM

Our students take hands-on learning to a whole new level

INTERNSHIPS

with top-rated employers including Sherwin Williams, WJET TV, The Lodge and Conference Center at Geneva-on-the-Lake, Progressive Insurance, MFG, Verizon Wireless and more.

CLINICAL ROTATIONS



by our Nursing and Allied Health students are completed at top Northeast Ohio medical facilities including the Cleveland Clinic and University Hospitals.

GO BEYOND YOUR BORDERS

like our nursing students who assisted with medical care during a week-long stay in the Dominican Republic or our business students who traveled to Europe to help start-up companies in Poland.

Our nursing students take patient care to heart, working with the American Red Cross to coordinate multiple blood drives throughout the year.





SUPPORT MAKES
YOU **UNSTOPPABLE**

SUPPORTIVE ENVIRONMENT **REAL CONNECTIONS**

Our students learn to **think critically, communicate effectively** and **utilize the resources around them** so they can cultivate their best selves.

We offer a variety of tools to help our students succeed even before they step foot in the classroom.



ADVISING BY PROGRAM

- Connect with your advisor
- Stay on track
- Get specific course recommendations



FIRST YEAR EXPERIENCE

- Provides a foundational experience
- Explore majors & careers
- Insight into academic expectations
- Develop financial literacy skills



SUPPLEMENTAL INSTRUCTION & TUTORING

- Peer-facilitated study groups
- Relaxed atmosphere
- Subject-specific assistance



RESEARCH-READY LIBRARY RESOURCES

- Expert guidance from our library staff
- Extensive research resources
- Access to academic journals online
- Comfortable study spaces





OUR
CAMPUS
IS A
COMMUNITY

THE WORLD AROUND YOU

18

Clubs to choose from -
or create your own

12

Student Life sponsored events
to connect students

11

Area Festivals
throughout the year

4

Welcome Back Days at the
start of each semester!

3

People needed to start a student
organization of your own!

∞

**UNLIMITED OPPORTUNITIES
FOR A GREAT COLLEGE EXPERIENCE!**

In addition to embracing their academic pursuits, our students are also a vital part of the development of Ashtabula County.

Kent State Ashtabula students have helped invigorate the community through their service efforts in support of a variety of nonprofit organizations.

CIVIC DEVELOPMENT

Growth Partnership of Ashtabula County
Civic Development Corporation
Young Professionals of Ashtabula County
Republican National Convention Planning Committee

ANIMAL RIGHTS

APL
Humane Society

EDUCATIONAL SERVICES

Spiderweb
ACCESS
Youth Opportunities
After School Discovery
A-tech

COMMUNITY SUPPORT AGENCIES

American Heart Association
Red Cross
United Way
Goodwill Industries





Start YOUR STORY

need help?

Student Services/Admissions
440-964-4217

Financial Aid
www.kent.edu/ashtabula/aid

Bursar
www.kent.edu/bursar

Student Accessibility Services
www.kent.edu/ashtabula/sas

Academic Affairs
440-964-4554

Barnes & Noble College Store
(Bookstore)
kent.bncollege.com

IT Helpdesk
support.kent.edu



VISIT CAMPUS

Come see all that campus has to offer and register for an admissions event at www.kent.edu/ashtabula/visit-campus.



APPLY FOR ADMISSION

Fall Application deadline is August 15th, Spring is December 15th
Apply during a campus visit or online (You will need an official high school transcript or GED Score report and any college transcripts if a transfer student).



APPLY FOR FINANCIAL AID

Create your FSA ID at www.fsa.ed.gov.
Fill out the FAFSA at www.fafsa.ed.gov – priority deadline is February 1st.



COMPLETE PLACEMENT EXAMS

ACT/SAT scores are not mandatory but if you have taken them send us your scores. **No ACT/SAT, no problem!** Work with our testing center to take the ACCUPLACER placement exam.



ATTEND ORIENTATION

Mandatory orientation program for all incoming students.
Registration for Summer/Fall admits opens in January and for Spring admits in September.

WWW.KENT.EDU/ASHTABULA/ADMISSIONS

HERE

See for YOURSELF



WE HOPE YOU'LL COME VISIT OUR CAMPUS AND SEE WHERE YOUR STORY BEGINS!



We offer a variety of visit opportunities to help you experience Kent State Ashtabula for yourself

CAMPUS VISIT DAYS

If you're looking for a traditional visit experience, then Campus Visit Days were made for you. During these visits, you'll go on a student-lead campus tour and learn more about the admissions process, financial aid, and the many opportunities available for you on campus.

INDIVIDUAL APPOINTMENTS

Prefer a one-on-one setting? We offer individual meetings with our Admissions staff.

MAJOR MONDAYS

Not sure yet what you want to study or want to learn about specific degree programs? Come to Major Mondays and observe a class, talk with students and learn more about campus from a program perspective.

SPECIAL EVENTS

Discover Kent State Ashtabula
Friday, October 14, 2016, 9:00 am - 12:00 pm

Presidents' Day Spring Preview
Monday, February 20, 2017, 9:00 am - 12:00 pm

FAFSA FRIDAYS

Excited about campus but need some Financial Aid guidance first? Available throughout the year, FAFSA Fridays are interactive workshops to help you complete the FAFSA and talk with our Financial Aid staff.



SOMETIMES THE HIDDEN GEMS
in life are **NOT SO HIDDEN**
AFTER ALL.



**REAL
VALUE
FOR REAL
LIFE**



and

VALUABLE AFFORDABLE EDUCATION

2016-17 Tuition Rates*

\$2,832
in-state tuition

\$3,668
bordering PA/WV
counties tuition

\$7,014
out-of-state tuition

* Rates based on **11+**
credit hours/semester

Types of Financial Aid

^ determined by your FAFSA

SCHOLARSHIPS

Awarded based upon merit and/or need. Does not need to be repaid.

GRANTS

Money that does not need to be repaid. Awarded to students with greatest financial need.^

WORK STUDY

Get an on-campus job to earn money towards tuition. Awarded to students with financial need.^

LOANS

Federal^ and private options. Does need to be repaid with interest.

FAFSA

- Apply for a FSAID and password
- Fill out the [free application](https://fafsa.ed.gov) at fafsa.ed.gov (our school code is 003052)
- Check your email often for updates.
ONLY ACCEPT THE AID YOU NEED.
- Contact our Financial Aid office for FAFSA ?'s and other resources



Last year,
we awarded over
\$150,000 in
scholarships to
Kent State Ashtabula
students!



APPLY YOURSELF

Apply online at **WWW.KENT.EDU/ADMISSIONS/APPLY**.
The application fee is \$40.

Admissions Criteria:

Kent State Ashtabula is an open enrollment campus, accepting prospective students from high school graduates and GED holders to college graduates.

► **New Freshman**

A new freshman is someone who has not attended college, university, technical or proprietary school after graduation from high school. If you took college credit courses while in high school please apply as a new freshman.

► **Transfer Students**

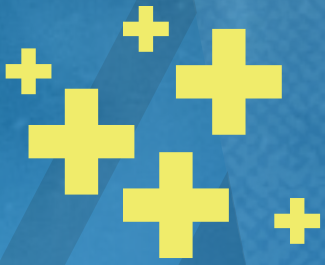
A transfer student is someone who has attended college, university, technical, or proprietary school after graduation from high school.

► **College Credit Plus**

The CCP program is designed to provide qualified high school and junior high school students with access to college level coursework at potentially no cost. Please visit www.kent.edu/ashtabula/ccp for more information including admission requirements.

**For more information on application types including
home schooled and guest student options, please visit**
WWW.KENT.EDU/ASHTABULA/ADMISSIONS-TUITION-AID





MAKE

IT

YOURS

WWW.KENT.EDU/ASHTABULA

Kent State University, Kent State and KSU are registered trademarks and may not be used without permission. Kent State University is committed to attaining excellence through the recruitment and retention of a diverse student body and workforce.

