

# Welcome to Cleveland!

ORIENTATION GUIDE 2023-2024

---



## Kent State University

College of Architecture and Environmental Design

Cleveland Urban Design Collaborative

# Overview

## CLEVELAND EXPERIENCE

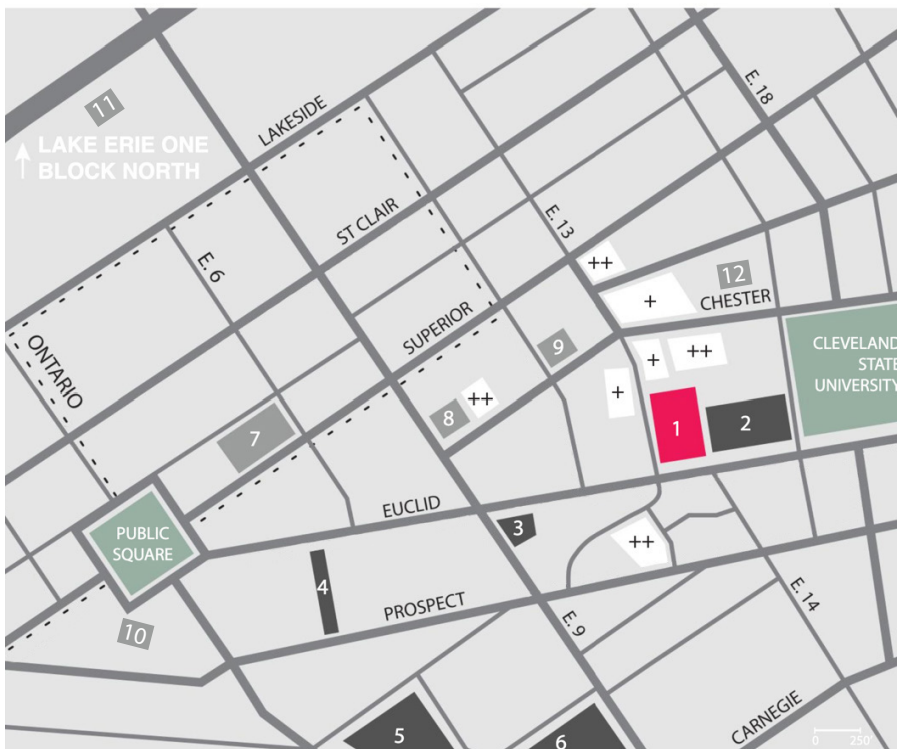
The Cleveland Studios are the home of several of Kent State University's College of Architecture and Environmental Design (CAED) graduate programs as well as the college's Cleveland Urban Design Collaborative (CUDC), an innovative, non-profit urban design practice committed to a sustainable, vibrant and inclusive urban future. This combination of Landscape Architecture, Urban Design, and the CUDC provides a rich context for complementary, multi-scalar integrated pursuits relating to the built environment.

The Cleveland Studio and CUDC offices are located on the upper floor of the historic Cowell & Hubbard Building. The building and space were renovated by a local design firm Westlake Reed Leskosky. The design approach was to reveal the history of renovations/alterations of the building by leaving many of the architectural elements, including raw concrete floors and plaster walls, exposed and intact. In keeping with this approach and to provide flexibility and ease of maintenance, much of the wiring and infrastructure is also left exposed. We hope that this will create an environment conducive to iterative and integrated design.

The CUDC combines client-based projects, applied research, and advocacy to impact urban design decisions and land use policy in Cleveland and throughout Northeast Ohio. They work closely with clients, civic organizations, academic partners, students, and a multidisciplinary network of professionals to address emerging issues, locally and nationally, and expand the ideas, energy, and resources. The CUDC works toward the improvement of the built environment through design assistance, research, education, and advocacy. In all its work, the CUDC strives to create livable, sustainable communities, enhance the public realm, protect natural and cultural resources, and stimulate economic prosperity. Learn more: [cudc.kent.edu](http://cudc.kent.edu)

## MAP

### DOWNTOWN CLEVELAND



#### DESTINATIONS

1. Kent State Cleveland Studios
2. Playhouse Square
3. Heinen's Downtown Grocery Store
4. East 4th Shops and Restaurants
5. Rocket Mortgage FieldHouse
6. Progressive Field

#### RESOURCES

7. Cleveland Public Library
8. FedEx
9. AlphaGraphics

#### GETTING AROUND

10. Tower City Center RTA Station
11. Amtrak
12. Greyhound Bus Station

#### PARKING

- + Surface Parking
- ++ Garage Parking

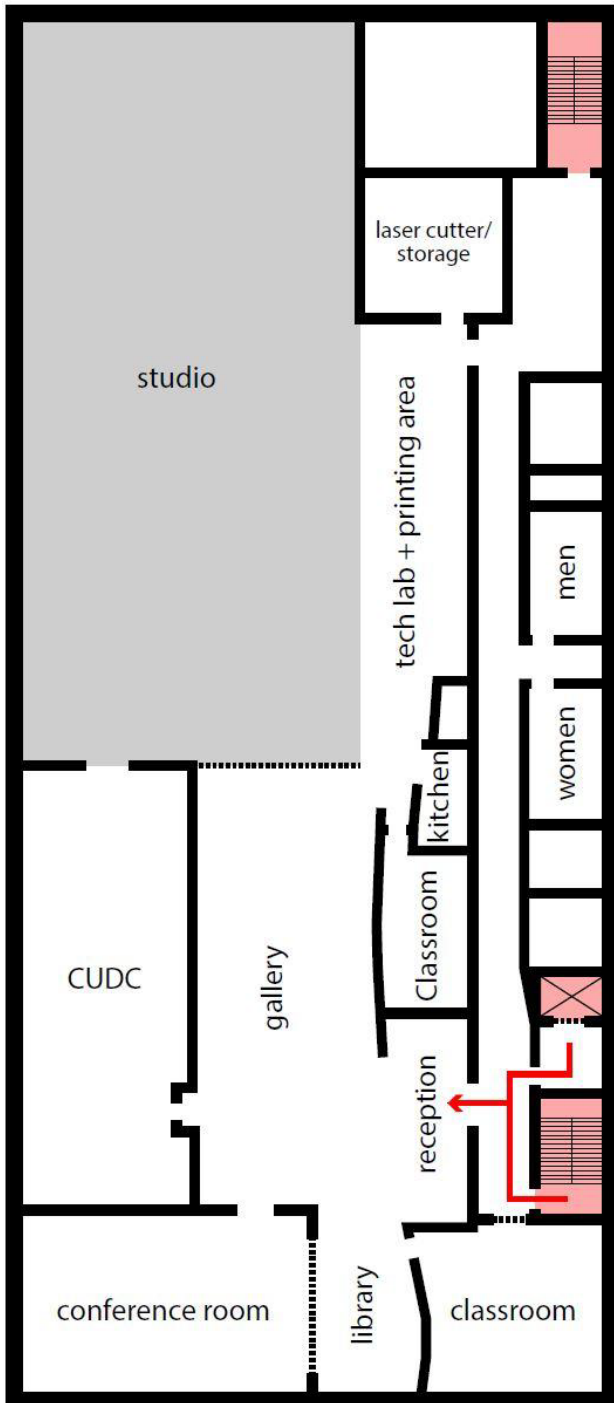
#### FREE TROLLEY

B line - - - - -

# Overview

## POLICIES & PRACTICES

---



As you begin your CAED graduate studies in Cleveland, please ensure that you read, understand and comply with these rules.

CUDC serves a variety of constituents who are engaged in a wide range of activities. The space is shared by students, faculty, university administration, design practitioners, representatives of local government, community development agencies, and out-of-town visitors.

### Office Hours

The building is accessible 24 hours a day, seven days a week, and graduate students are welcome to use the facilities at any time.

### Security

The building has a security system which allows unlimited access for authorized users of the facility. Keycards will be issued to each student for 24 hour access to the building. There is a \$20 deposit for keycards that will be returned to you when the keycard is returned upon graduation. There is a \$20 replacement fee for missing keycards.

Camera: For our safety, the entrance lobby is monitored 24 hours a day via a security camera.

### Work Spaces

All workstations are wired into the computer network. You are welcome to set up your own computer equipment in your workspace, however, we cannot accept responsibility for its security.

All workstations are equipped with an MDF work surface. Students should affix borco to their work surface.

# Overview

## FACILITIES

---

### PRINTING

Within our facility, there is a printer, copier, scanner, large-format color plotter, laser cutter, 3D printers, and CNC mill available for student use. We use the Pharos system for student printing.

### CLEANLINESS

The cleaning company comes every evening, Monday through Friday. Please treat them with courtesy and cooperation. They will empty your trash can and clean the floor of your workspace. They will not touch anything on your desk. Anything you want taken away should be clearly marked as trash, or stacked (neatly) at the corner of the studio by the exit door, without blocking the door.

Everyone is responsible for keeping their own area clean. There are bottles of disinfectant and microfiber cleaning cloths available for this purpose.

### IT ISSUES

We will have a student employee for IT that students should contact first. That student (TBA) can relay IT concerns to CAED IT staff. In the meantime, contact CUDC/CAED office staff or [caed-it@kent.edu](mailto:caed-it@kent.edu)

### BICYCLES

We encourage you to ride your bicycles to the Cleveland Studio. At the moment we ask that bicycles be locked and stored towards the rear of the studio, close to the rear exit door. Do not lock your bicycles in plain view of the gallery space. Also, do not leave your bicycle locked in-studio overnight, you should take it home with you in the evening. Take bicycles in and out through the rear studio door. Please do not take bicycles through the Gallery Space. Do not store bicycles in any common Cleveland Studio space: gallery, kitchen, conference room, library, workroom or classroom. The entrance lobby on Euclid and the second floor corridor are common space under the control of our landlord. Bicycles should not be stored in the entrance lobby or the second floor corridor.

### MECHANICAL SYSTEMS

The system is automatically set to a temperature range based on occupancy and season. Heat, A/C or a combination of both is automatic. The set temperature swing on the facility is between 68-74 degrees depending on the outdoor temperature. Tampering with the thermostats will have little to no impact on the temperature, so leave them set to their central position. Perimeter fin tube: Supplemental heat for winter is supplied through perimeter fin tube located below the windows. The landlord will turn this system on when the temperature warrants it.

### RESTROOMS AND SECOND FLOOR CORRIDOR

The restrooms and second floor corridor are shared common spaces under the control of our landlord. Do not leave books, magazines or personal effects in the restrooms. Do not pin-up or place any displays on the restroom walls.

### DRUGS AND ALCOHOL

As part of KSU, the Cleveland Studio observes the Ohio Board of Regents' policies on the use of drugs and alcohol: Alcohol MAY NOT be consumed in the building, except during special events. The Cleveland Studio is a smoke-free environment. Smoking is only permitted 25ft from the entrance.



# Academic

## GRADUATE PROGRAMS

---

The CAED offers a number of graduate degree programs in Architecture, Urban Design, and Landscape Architecture at the Cleveland Studios.

### STUDIO CULTURE

The CAED promotes a positive and respectful learning environment through the fundamental values of optimism, respect, sharing, engagement and innovation among the members of the student body, faculty, staff and administration. The CAED encourages students and faculty to appreciate these values as guiding principles of professional conduct. Although expectations are high, the CAED recognizes a balanced life and well rounded university education are critical for each student's personal growth.

CAED studios are classroom environments which foster independent and collaborative inquiry, the acquisition of knowledge and management skills, and the establishment of a strong work ethic to enhance students' professional growth. Peer and faculty review within studio stimulates questions, strengthens dialogue, supports critical and creative thought, and promotes the discovery and application of new knowledge. Studio fosters design thinking through research and is a forum for design innovation and exploration with the goal of improving quality of life.

CAED studios encourage life-long learning through establishing foundations in design thinking, research habits and the integration of life experiences in the pursuit of excellence in design.

### KENT STATE RESOURCES

[Advising](#) - Program Specific Advising

[Mental Health](#) - A variety of resources available to all students

[One Stop for Student Services](#) - Financial aid and scholarships, billing and payment, transcripts, enrollment verifications



*"Graduate school is the stage in my education where I finally feel like I have control over how I want to pursue my academic goals. While the transition from undergraduate coursework to graduate level study can be challenging, the basic understanding of architecture is complete, leaving you to pursue your interests in greater detail. Graduate school is less about understanding information at a base level, and more about pushing yourself to view the world in a different way. The Cleveland Studio provides you with the ability to better understand the city in a way that is unique to your interests and you can really start to experience graduate study in a new culture. Due to the ability to collaborate with students pursuing different degrees, you have an increased ability to communicate with other professionals and generate relationships with people outside of your given profession. There is no better way to understand urban issues than by studying and experiencing the city firsthand. Welcome to the Cleveland Studios!"*

**-Emily Williams, M.Arch + M.U.D '18**

# Resources

## DATA + MATERIALS

---

### THE CLEVELAND STUDIO LIBRARY

Located in the front portion of the facility, the Cleveland Studio library is a convenient and valuable resource for students. Students are free to explore the collection at any time, however signing books out must be done through the proper channels. Our book collection here at the Cleveland Studio have been shelved using the Library of Congress call numbers, and cataloged digitally using LibraryThing. This means that titles, authors and keywords can be searched using the Cleveland Studio LibraryThing account online, accessed at: [www.librarything.com](http://www.librarything.com)

Username: CUDC

Password: 1309library14

Under the 'Tags' column, locate the Library of Congress call number, which can be used to find materials on the bookshelf. To use the LibraryThing system, remember the following:

- Sign in to Library Thing using the credentials given above.
- Click "All collections."
- Find the book(s) you want to check out.
- Go to "Collections" - in the drop down menu select "Checked Out" and deselect "Your library."
- Add a 'tag' with your name so we know you've signed out a book.
- When returning a book, please change the Collection back to "Your library," and remove your tagged name.

In addition, when returning a book to the library shelves, please place it where it belongs according to the call number system. A few tips:

- Labels are read from top to bottom.
- Letters are shelved alphabetically. The Number that follows should be shelved as a whole number in ascending order.
- In a Decimal line(s), anything following a decimal should be shelved alphabetically and then numerically.

### PRINTING

Several printers are available for student use at the Cleveland Studio. To use any of these, you must first deposit "flash cash" onto your FlashCard to pay for your printing. You may do this at <https://services.jsatech.com/login.php?cid=40&> (yes, that is the proper link). After doing this, locate a computer that operates on the Pharos system (found in the studio tech lab) and swipe your card through the attached card reader. Sending files to these computers may be done via the other [non-Pharos-operating] computers found in the tech lab. This service is also available on the Kent campus.

### LASER CUTTER

The Cleveland Studio has a laser cutter available for student use in the fabrication space, near the rear studio exit. This machine cuts acrylic, chipboard, matte-board, museum board, cardboard, basswood, other wood and paper based products. Please consult your digital output student worker, who will be identified at the beginning of each semester. We also have laser cutters available on the Kent State Main campus. For more information:

<https://ksuprod.sharepoint.com/sites/CAEDFabLAB/>

### SPRAY PAINT / ADHESIVES

The Cleveland Studio does not have a spray booth. Please do not spray paint or adhesives at your workstation, in the fabrication space, in the stairwell, or anywhere else inside the facility.

# Resources

## DATA + MATERIALS (continued)

---

### 3D PRINTERS

Additionally, the Cleveland Studio has 3D printers available for student use in the fabrication space, near the studio exit. The 3D printer makes objects with PLA filament in a variety of colors. Please consult your digital output student worker, who will be identified at the beginning of each semester. We also have 3D printers available on the Kent State Main campus. For more information: <https://ksuprod.sharepoint.com/sites/CAEDFabLAB/>

### CNC MILL

A recent addition to the Cleveland Studio, the CNC Mill, is available for student use in the back room, near the studio exit. The CNC Mill cuts wood, plastic, and aluminum. Please consult your digital output student worker, who will be identified at the beginning of each semester. For more information: <https://ksuprod.sharepoint.com/sites/CAEDFabLAB/>

### MATERIALS

- Blick | <https://www.dickblick.com/>
- Michaels | <https://www.michaels.com/>

### PRINTING

- SE Blueprint, Inc. | [www.seblueprint.com](http://www.seblueprint.com)
- FedEx Office + Print Center | [www.fedex.com](http://www.fedex.com)
- Brothers Printing | (216) 621-6050
- Riot Creative Imaging | 1-855-RIOT-411

### DATA

- US Census Bureau | [www.census.gov](http://www.census.gov)
- Google Scholar | [www.scholar.google.com](http://www.scholar.google.com)
- NOACA | [www.noaca.org](http://www.noaca.org)
- City Data | [www.city-data.com](http://www.city-data.com)
- The Urban Land Institute | [www.uli.org](http://www.uli.org) + [www.udcompetition.org](http://www.udcompetition.org)
- Cleveland Public Library | [www.cpl.org](http://www.cpl.org)

### MAPPING

- Cuyahoga County Planning GIS | [gis.cuyahogacounty.us](http://gis.cuyahogacounty.us)
- USGS 7 . 5 minute series | [store.usgs.gov](http://store.usgs.gov)
- KSU Library | [www.library.kent.edu](http://www.library.kent.edu)

### FABRICATION

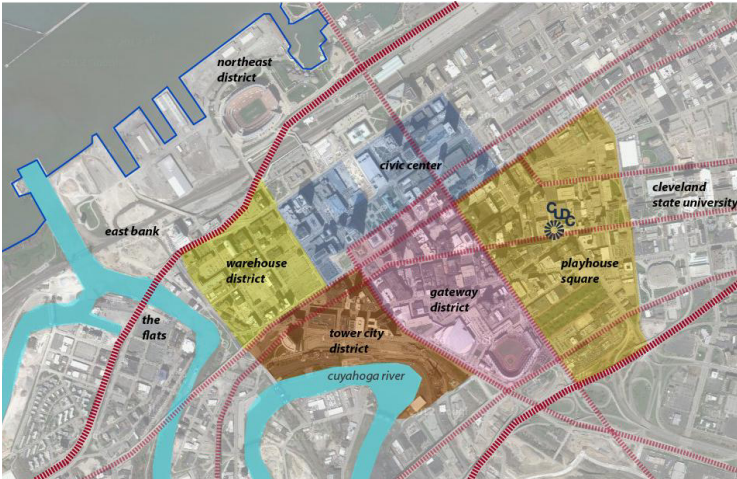
- Cleveland Public Library Tech Central | [cpl.org/thelibrary/subjectscollections/techcentral/](http://cpl.org/thelibrary/subjectscollections/techcentral/)
- Workforce Ideation Station | <https://www.tri-c.edu/workforce/ideation-station.html>

### COVID-19

- Kent State University Plan + Guidelines | <https://www.kent.edu/coronavirus>

# Lifestyle

## DOWNTOWN CLEVELAND



### WAREHOUSE DISTRICT

The streets of West 6th, West 9th and St. Clair are lined with destination restaurants and nightlife. Unique coffee shops and specialty boutiques add to the charm of this neighborhood, which includes historic warehouses that have been converted into distinctive loft apartments and condos.

### GATEWAY DISTRICT

Home to both Progressive Field and Quicken Loans Arena, the district is active year-round with baseball (Indians), basketball (Cavaliers), hockey (Lake Erie Monsters), football (Gladiators) and entertainment ranging from national concert acts to ice skating performances. A host of pubs offer a bite to eat and frosty drink.

### E. 4TH DISTRICT

A nightlife destination of choice, this narrow brick street is packed with upscale eateries and entertainment. Take in live music at the House of Blues. Bowl at the upscale Corner Alley. Savor a pint at Flannery's or dine at Chef Michael Symon's Lola. East 4th street has it all ... and more.

### PLAYHOUSE SQUARE

Cleveland's major theater district is Playhouse Square, the second largest performing arts center in the country, which draws well over one million visitors annually. The five beautifully restored theatres are home to the opera, ballet, concerts, an impressive Broadway Series and the Great Lakes Theatre Festival.

### THE FLATS DISTRICT

On the banks of the Cuyahoga River, The Flats is home to restaurants, concert venues, nightclubs, and water-sports rentals. The Nautica Entertainment Complex on the west bank of The Flats features the 5,000-seat, outdoor Jacobs Pavilion at Nautica.

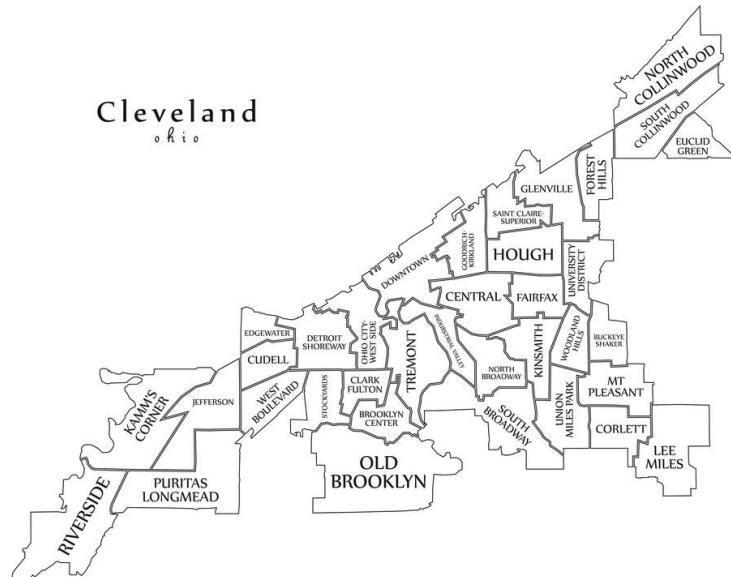




# Lifestyle

## CLEVELAND NEIGHBORHOODS

---



### OHIO CITY

Just across the Cuyahoga River and west of downtown, Ohio City is home to the West Side Market. The landmark, easily identified by its graceful clock tower, is the site of 180 booths offering an assortment of fresh produce, meats and other specialties from around the world. In addition to a number of ethnic eateries and a rapidly growing number of bars and micro breweries, Ohio City has many renovated Victorian-era homes.

### TREMONT

Tremont is a small but lively community southwest of downtown Cleveland. Originally a working-class neighborhood for industrial workers and their families, it has morphed over the past few decades into a truly unique destination. Within its borders are an eclectic mix of bars, restaurants, shops, and attractions, as well as a wide variety of affordable housing options.

### LITTLE ITALY

First settled in the late 19th century by skilled Italian artisans, Little Italy (also known as Murray Hill) has retained much of its Old World charm and tight-knit sense of community. A blend of art galleries, shops and restaurants, Little Italy offers some of the finest Italian dining in Cleveland. Whether it's pizza or pasta, calzone or calamari, you'll find it in Little Italy.

### LAKEWOOD

The City of Lakewood is located 5 miles west of downtown. The city is composed primarily of a vintage residential community offering diversity in housing from modest single homes and apartments to luxury "Gold Coast" condominiums and homes of distinct architectural design located within a national historic district. Lakewood is recognized for its tree-lined streets, excellent school system and a wide array of dining and nightlife options.

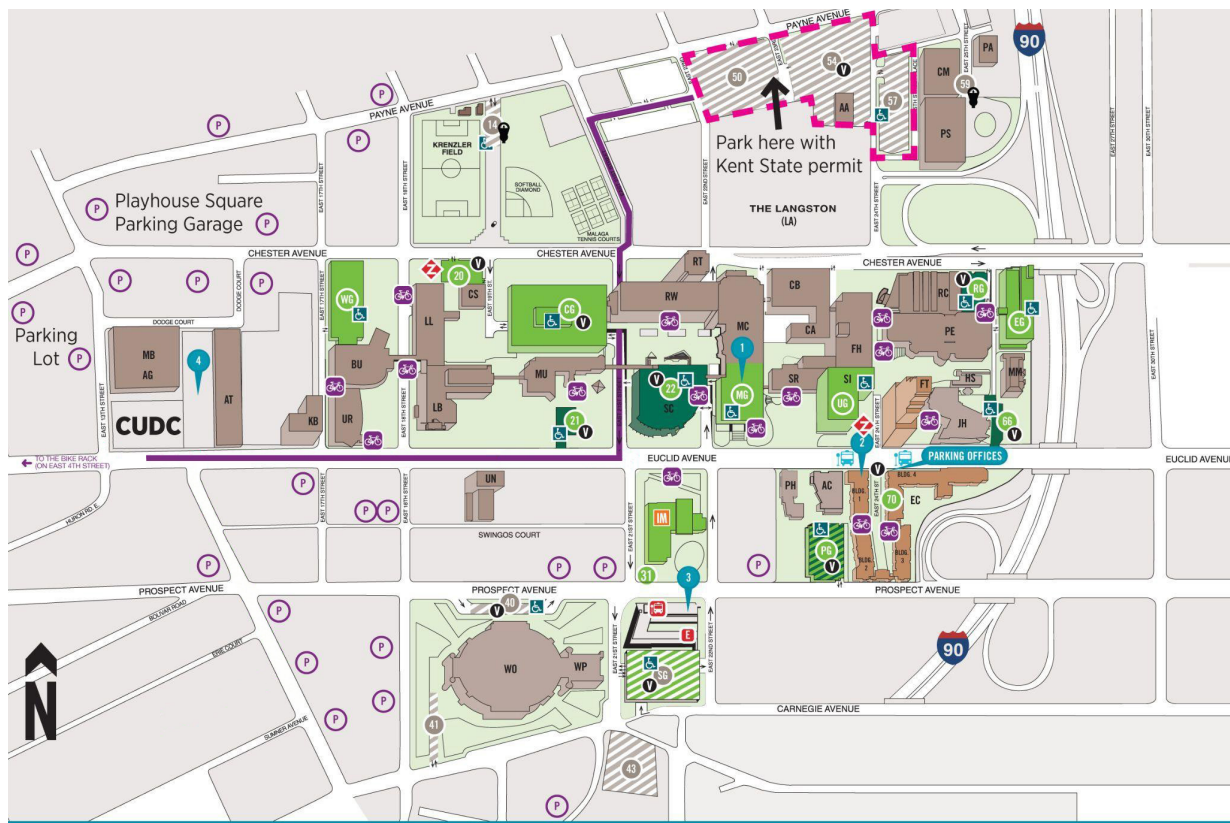
# Lifestyle

## GETTING AROUND

### CAR + PARK

There are many commercial parking lots near the CUDC/Cleveland Studios with hourly, daily, and monthly rates. There is also street parking, but be sure to pay attention to the time on your parking meter. Cleveland enforces on-street parking aggressively and parking tickets are expensive. The most cost effective option is to purchase a parking permit from the Kent State parking office and request a free YACK sticker. The YACK sticker allows you to park in designated lots at Youngstown State, University of Akron, and Cleveland State, as well as on the Kent State campus.

- A Kent State hang tag with a YACK sticker will allow you to park in Cleveland State lots 50, 54, and 57 at the intersection on Payne Avenue and E. 22 Street. This is about a 10-minute walk from the CUDC.
- KSU student parking permits can be ordered here: <https://kentparking.t2hosted.com/Account/Portal> You can request the YACK sticker after you order your permit by sending a note to [parking@kent.edu](mailto:parking@kent.edu). Important: don't forget the YACK sticker! CSU will give you a parking ticket if you park in their lots without the YACK sticker on your KSU hangtag.
- CSU also has an indoor walkway system called the Innerlink that will get you most of the way from the CSU parking lot to the CUDC. The Innerlink is a good option at night or during cold and rainy weather. If you'd rather not walk all the way from the CSU parking lot to the CUDC, there are usually a lot of rental scooters and e-bikes scattered around on the CSU campus.



# Lifestyle

## GETTING AROUND

---

### **RTA - <https://www.riderta.com/>**

- Bus - multiple routes can be found right around CUDC
- Rail - three lines that stretch from east to west of Cleveland
- Student U-Pass program - <http://www.riderta.com/programs/u-pass>

Kent State students are not eligible for this program unless they are taking elective courses at Cleveland State. All undergraduate, graduate and law students taking one or more credit hours on the CSU Main Campus are eligible for a U-Pass that costs \$25/semester. Go to the Treasury Service Office, Room 15 in the Main Classroom Building at Cleveland State, or call 216.687.5249.

### **GREYHOUND - <https://www.greyhound.com/>**

- Bus station found just north of CUDC

### **AMTRAK - <https://www.amtrak.com/home>**

- Capital Limited - Chicago/Cleveland/Pittsburgh/Washington DC
- Lake Shore Limited - New York/Boston/Cleveland/Chicago
- Station found north of CUDC

### **BIKE**

- Bike Cleveland - <https://www.bikecleveland.org/resources/getting-around-bike/>
- Ohio City Bike Co-op - <https://ohio-city-bicycle-co-op.shoplightspeed.com/>

### **CLEVELAND HOPKINS INTERNATIONAL AIRPORT - <https://www.clevelandairport.com/>**

- 25-minute drive from CUDC
- RTA Rail Route available
- Services Northeast Ohio region

# Lifestyle

## CITY LIFE

---

### RECREATION

- Parker Hannifin Downtown YMCA - <https://www.clevelandymca.org/>
- Cleveland State Rec Center - <https://csurec.com/>

### LIBRARY

- Cleveland Public Library - <https://cpl.org/>

### PARKS

- Cleveland Metroparks - <https://www.clevelandmetroparks.com/>
- Cuyahoga Valley National Park - <https://www.nps.gov/cuva/index.htm>

### EVENTS

- This Is Cleveland - <https://www.thisiscleveland.com/>
- Downtown Cleveland - <https://www.downtowncleveland.com/>

### GROCERY STORES

- Heinen's - <https://www.heinens.com/stores/downtown-cleveland/>
- Constantino's Market - <http://www.constantinosmarket.com/>
- Aldi - <https://www.aldi.us>
- Asia Plaza - <https://asiaplazacleveland.com/>
- Rumi's Market - <https://rumis.store/>

### SHOPPING AREAS

- Steelyard Commons - <http://www.steelyard-commons.com/>

### BANKING

- PNC - <https://www.pnc.com/en/personal-banking.html>

### SUPPORT SERVICES

- CARES Center at Kent State - <https://www.kent.edu/CARESCenter>
- Greater Cleveland Food Bank - <https://www.greaterclevelandfoodbank.org/get-help/find-food>
- St. Malachi Parish Monday Night Meal - 2459 Washington Ave., Cleveland
- Legal Aid Society of Cleveland Tenant Information - 216.861.5955



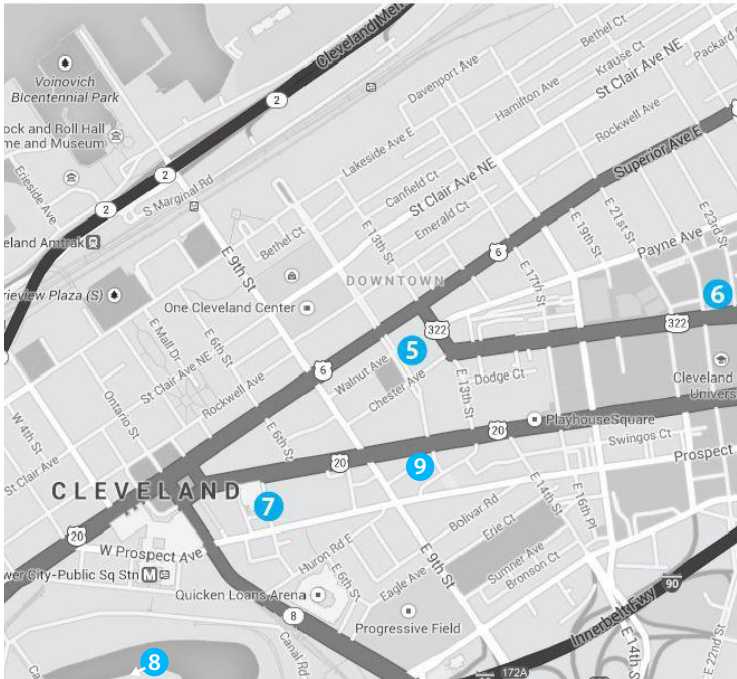
## HOUSING OPTIONS DOWNTOWN



# Lifestyle

## HOUSING OPTIONS DOWNTOWN

---



### **5. RESERVE SQUARE**

(844) 581 - 5805

[www.reservesquareapts.com](http://www.reservesquareapts.com)

Price Range: \$891 - \$2194

2 Blocks from CUDC

### **6. THE LANGSTON**

(844) 412 - 1968

[www.thelangston.com](http://www.thelangston.com)

Price Range: \$833 - \$1930

4 Blocks from CUDC

### **7. THE ARCHER APARTMENTS**

(216) 264 - 3606

[www.liveatarcherapts.com](http://www.liveatarcherapts.com)

Price Range: \$1417 - \$2094

10 Blocks from CUDC

[Warehouse District]

### **8. THE CLEVELAND HOSTEL & GUESTHOUSE**

(216) 394 - 0616

[www.theclevelandhostel.com](http://www.theclevelandhostel.com)

Price Range: \$67/night based on 2 people (all rates are subject to sales and bed tax)

2.3 miles from CUDC

[Short term stay]

### **9. THE ATHLON**

(216) 279 - 8257

[www.theathloncac.com](http://www.theathloncac.com)

Price Range: \$1100 - \$2825

1 Block from CUDC

### **FOR MORE INFO:**

Please contact CUDC faculty for further details and opinions on specific locations and/or lifestyle questions, comments and concerns. We, at the CUDC, take pride in our student body and encourage downtown living as a way of relating to the urban environments that we study, research and design. However, students should pick a housing option based on their personal requirements for comfort, safety, and convenience.

# FAQ

## FREQUENTLY ASKED QUESTIONS

---

### **How do I get around the city?**

Cleveland is a very walkable city but if you'd rather ride then walk, The Cleveland transit system (GCRTA) is a convenient way to get around. Unfortunately, there are no student discount passes for the GCRTA. Visit <https://www.riderta.com/> for fares, schedules and maps.

### **How do I travel from the Cleveland Studios to Kent State University's main campus in Kent?**

The PARTA bus system offers the Cleveland Express route that travels to/from Cleveland to Kent twice a day, Mon-Fri. Fare is \$5.00 each way to/from Cleveland or \$46.00 for a 10-Ride pass. Visit [www.partaonline.org](http://www.partaonline.org) for the bus schedule and times or download it here: [https://www.partaonline.org/\\_files/ugd/dd92bc\\_ff72b7f88df04315889130f9fac27d84.pdf](https://www.partaonline.org/_files/ugd/dd92bc_ff72b7f88df04315889130f9fac27d84.pdf).

### **Where do I park my car?**

There are many commercial parking lots near the CUDC/Cleveland Studios, but the most cost effective option is to purchase a parking permit from the Kent State parking office ([www.kent.edu/parking](http://www.kent.edu/parking)) and request a free YACK sticker. The YACK sticker allows you to park in designated lots at Youngstown State, University of Akron, and Cleveland State, as well as on the Kent State campus. Cleveland State lots 50, 54, and 57 are approximately a 10-minute walk from the CUDC.

### **With so many housing options, how to find the right one for me?**

As stated in this guide, there are several housing options for our Cleveland Studios students to live near the CUDC. If you are looking for a more traditional campus residence, The Langston is a great option within 4 blocks of the CUDC. It is a privately-owned, student-oriented housing complex that's affiliated with Cleveland State University. Students can rent a room within a suite and use Langston's matching platform to choose their suitemates. Visit [www.thelangston.com](http://www.thelangston.com) for rates and availability.

### **Where do I go for recreation and fitness?**

The College of Architecture and Environmental Design offers free student memberships at the Cleveland State Rec Center located at 2420 Chester Ave. (<https://csurec.com/>). The facility offers weightlifting, swimming, racquetball and pickleball courts, an indoor track and group fitness classes. Request the membership with the CUDC office manager.

### **Where can I meet new friends and get involved in campus life?**

Kent State University has over 350 student organizations ranging from academic to cultural. Through student organizations, you'll have the opportunity to meet new friends while sharing similar interests or helping a social cause. Find a student organization here: <https://www.kent.edu/csi/student-organizations>. Another great resource is UCommute (<https://www.kent.edu/csi/ucommute>) which helps connect off-campus students engage in campus life and offer assistance through social, academic and leadership programs.