

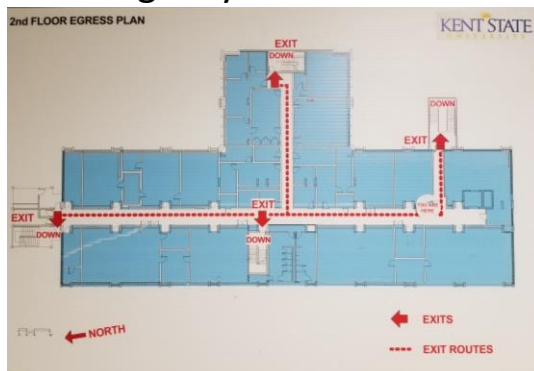
# Safety in the Stall

## How to Be Prepared for an Emergency Situation

1. Be able to locate all Safety Equipment: First Aid Kit, Spill Kit, Eyewashes, Safety Shower, etc.



2. Know Emergency Exit Routes.



3. Never remain in the lab during a fire alarm or any emergency that requires immediate evacuation.



4. Use **ESCAPE**

**E**: Exit the area

**S**: Secure the scene

**C**: Call 911

**A**: Assess the problem

**P**: Pull your building's fire alarm

**E**: Exit the building

Kara A. Barnett  
Chemical Health & Safety Coordinator  
Room 230

Chris Copeland  
Laboratory Manager  
Room 230