

In this Review...

Professional Advisory Board	1
Bahamas Counseling Cohort	
Kent Koleji	2
Student-to-Student Connections	
COST	3
China & Taiwan Partnerships	
ILEP Community Service	
Calendar of Events	4

The Read Review welcomes news items and photographs of cultural or international events. We also seek articles about international education.

Please submit your materials to: Sonya Demirci, Gerald H. Read Center for International and Intercultural Education: White Hall, Room 215 or sdemirci@kent.edu.

CIIE Professional Advisory Board: Bahamas Bound

The Gerald H. Read Center's Professional Advisory Board (PAB) will hold its Spring meeting in the Bahamas March 6-7. The Bahamas location is ideal not only for the warm and sunny weather, but also for its hosting of the Consortium for Overseas Student Teaching (COST) Annual Meeting during the same week and its long established connection between The College of The Bahamas and KSU. KSU is in the application stages of becoming the new home for the COST Secretariat, so this will facilitate members of the PAB to attend both events. KSU has a long standing partnership with The College of The Bahamas (see article below), so the PAB can further develop institutional connections.

The itinerary for the PAB members is full of events that fit with its mission to strengthen partnerships, provide international contacts and move forward the vision of CIIE. Members will be

visiting an International Baccalaureate school, working as usual on strategic planning for the CIIE, networking with The College of The Bahamas administration to further strengthen the partnership, as well as attending sessions with the Minister of Education of the Bahamas and the U.S. Ambassador to the Bahamas.

Professional Advisory Board members who will be in attendance include Dr. Erwin Epstein, Comparative and International Education Society; Dr. Sharon Brennan, COST; Mr. Batt Burns, Irish Educator; Sue Hinkle, Sixth-grade Teacher in the South Euclid-Lyndhurst City Schools; Mr. Valdez Russell, The College of The Bahamas; and Mr. Doug Sessions, International Baccalaureate. The PAB meets semi-annually. The Fall meeting takes place at KSU and the Spring meeting takes place electronically or at an off-campus site.

Bahamian School Counselor Cohort to Visit KSU

The College of Education, Health and Human Services (EHHS) plans to welcome a cohort of Bahamian counseling students on campus this summer from June 30– August 4. The students are currently enrolled in the graduate counseling program at The College of The Bahamas (COB), with KSU faculty teaching in the Bahamas and COB faculty serving as adjunct faculty in specific areas. According to **Dr. Jason McGlothlin**, Counseling and Human Development Services Masters' Program Coordinator, while at KSU the COB students will enroll in three intensive school counseling courses taught by **Dr. Marty Jencius**, **Dr. Betsy Page** and **Dr. Steve Rainey**.

Since July 2001, EHHS has delivered graduate programs in school counseling, educational administration, and special education at COB. This arrangement marked the EHHS's first on-campus and off-shore program. The first joint commencement exercise occurred in January 2003, marking Kent State University's first off-shore graduation.



Dr. Marty Jencius



Dr. Betsy Page



Dr. Steve Rainey



Professional Development In Turkey

Each year Kent State University's College of Education, Health and Human Services sends four teams of education faculty to Avrupa Kent State Koleji in Istanbul, Turkey. These faculty teams provide a variety of educational services for Avrupa Kent State Koleji and the local community. Services include professional development workshops for Kent Koleji in-service teachers, a seminar for pre-service teachers at the Avrupa Community School, a seminar for parents, demonstration classes and seminars with English teachers from local public schools.

This year the theme for the programs is literacy development. According to Dr. Linda Robertson, Director of CIIE, "The professional development programs strive to provide the best American practices in education adapted to the Turkish cultural context." In Fall 2010 **Dr. Wendy Kasten** and **Dr. Kasim**

Yildirim represented KSU at Kent Koleji. This Spring 2011 **Dr. Bill Bintz**, **Dr. Denise Morgan**, and **Dr. Alexa Sandmann** will lead the professional development programming. **Dr. Denise Morgan** will provide expertise in early childhood education, while **Dr. Bill Bintz** and **Dr. Alexa Sandmann** will focus on intermediate grades.

In September 2005 Turkish and international children from ages 3 to grade 3 began attending the new bilingual, multicultural elementary school. This private school is governed by the laws of the Ministry of Education of the Republic of Turkey and funded by the Europe Education Foundation. The school faculty and administration are guided in constructivist learning environment, technology integration, and effective practices by Kent State University Education faculty. Instruction is conducted both in English and in Turkish. Both cultures and languages are valued and taught.



Dr. William Bintz



Dr. Wendy Kasten



Dr. Denise Morgan

AISE: Student-to-Student Connections

The Association of International Students of Education, Health and Human Services (AISE) has produced a PowerPoint intended to connect with the Bahamian cohort of school counselors who will be studying at KSU this summer. The presentation will be sent to The College of The Bahamas prior to the students' departure for KSU. This multimedia presentation is intended to remind the Bahamian students that they are a part of KSU, and we are warmly anticipating their arrival.. **Ajisa Fukudenji**, a master's student in counseling says, "Even though we are not in the same location, we can still exchange the knowledge of counseling through this partnership and further develop these programs at each institution."

The PowerPoint highlights Northeast Ohio, KSU facilities, EHHS, the Counseling and Human Development Services Program, honorary societies, and AISE's special events. Interviews will include **Dr. Marty Jencius**, **Dr. John West**, **Bayu Cahyo Widyatmoko**, and **Hilary Parsons**.

Reflections from Returning COST Participant



By *Caitrin Scott*

Through teaching overseas for a semester, even though I was in a developed country (Australia), I have gained a much larger perspective of the world. I feel like I was introduced to the rest of the world for the first time. I had students in my classroom that came from all over the world and they

taught me about life. I no longer thought the U.S. was the only grounds for me to teach in. Not only did I learn a lot about Australia from my students, friends, co-workers, and others I was surrounded by, but I also learned a lot about my home country (The United States), and that has helped me know how to better approach teaching here in America. It has also pushed me to take my desire to travel a step further and combine it with my passion for teaching. I can't wait to see what the future holds for me!

Cultural Dialogues Continue

International partnerships continue to provide students in EHHS opportunities to discuss global issues in different contexts and from different perspectives. **Aselin (Sih-Yu) Chen**, an Exchange Student from National Tai Chung University in Taiwan, and **Tianjun Shen**, Graduate Student from Shanghai International Studies University (SISU) in Shanghai, China, will be presenting as part of the Read Center's ongoing Cultural Dialogue Series. The two international students will be presenting on educational systems in their respective home countries.

Sih-Yu Chen is an exchange student through the exchange program between KSU and National Tai Chung University. Sih-Yu is an undergraduate student in Middle Childhood Studies.

Tianjun Shen is participating in the 3+2 partnership between KSU and SISU. He is working towards a Master's degree in Higher Education.

ILEP Gives Back to Local Community

Scholars in the International Leaders in Education Program (ILEP) have been collaborating with *Arts Alive!*, a local arts program offered by the Youth Development Program of Family and Community Services, Inc. in Ravenna, Ohio. This service learning activity strives to provide an expanded cultural exchange opportunity to the youth participants.

Throughout the month of February, the ILEP scholars partnered with the local *Arts Alive!* youth participants to design a program to be performed Tuesday, March 1, for senior citizens. The program will offer a cultural exchange focusing on the art, food, music and poetry of

these countries. According to the *Arts Alive!* Newsletter, "This program will further our mission to provide free activities in a safe and positive learning environment that promotes learning, as well as connecting local youth to positive adult role models."

The *Arts Alive!* program serves youth ages 5-21 years of age and provides free activities in the visual, literary and performing arts. The curriculum is offered as an after-school program. Facilitators strive to promote experimentation, collaboration and innovation in a safe and positive learning environment.





Celebrate International Women's Day

Tuesday, March 8, 2011

All are welcome to attend.

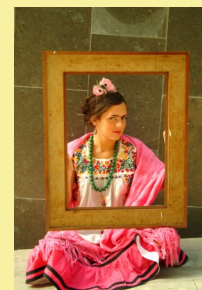
Sponsored by the Gerald H. Read Center for International and Intercultural Education

International Women's Day is a global day celebrating the economic, political and social achievements of women throughout the world. This year's theme will focus on women in the arts and how their contributions have impacted the world.

International Female Artists Poster Contest

Monday, March 7-Thursday, March 10, 200 White Hall

Learn about the contributions from female artists around the world. Poster displays created by KSU students will be available for viewing throughout the week. Vote for your favorite posters.



Dr. Janaki Rajan Presents Women's Rights as Human Rights: From Beijing to the Millenium Development Goals

Monday, March 7, 12:00 p.m., 200 White Hall

Janaki Rajan is Professor in Education at Jamia Millia Islamia and is the Desmond Lee International Visiting Professor at Webster University, St. Louis, Missouri, USA. She headed the Centre for Women's Studies at Jamia.

Cultural Dialogue: Taking Care of Yourself

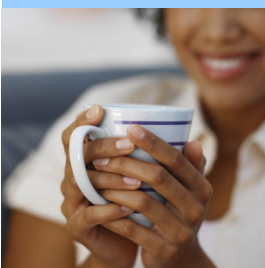
Tuesday, March 8, 12:00 p.m., 200 White Hall

Our International Leaders in Education Program scholars will be presenting on how individuals take care of themselves around the world.



International Tea and Female Artist Poster Award Ceremony

Thursday, March 10, 4:00 p.m., 200 White Hall



Bring a friend and join us for afternoon tea with an international twist. Teas from around the world will be featured. The International Female Artists Poster Contest will conclude with a brief awards ceremony.