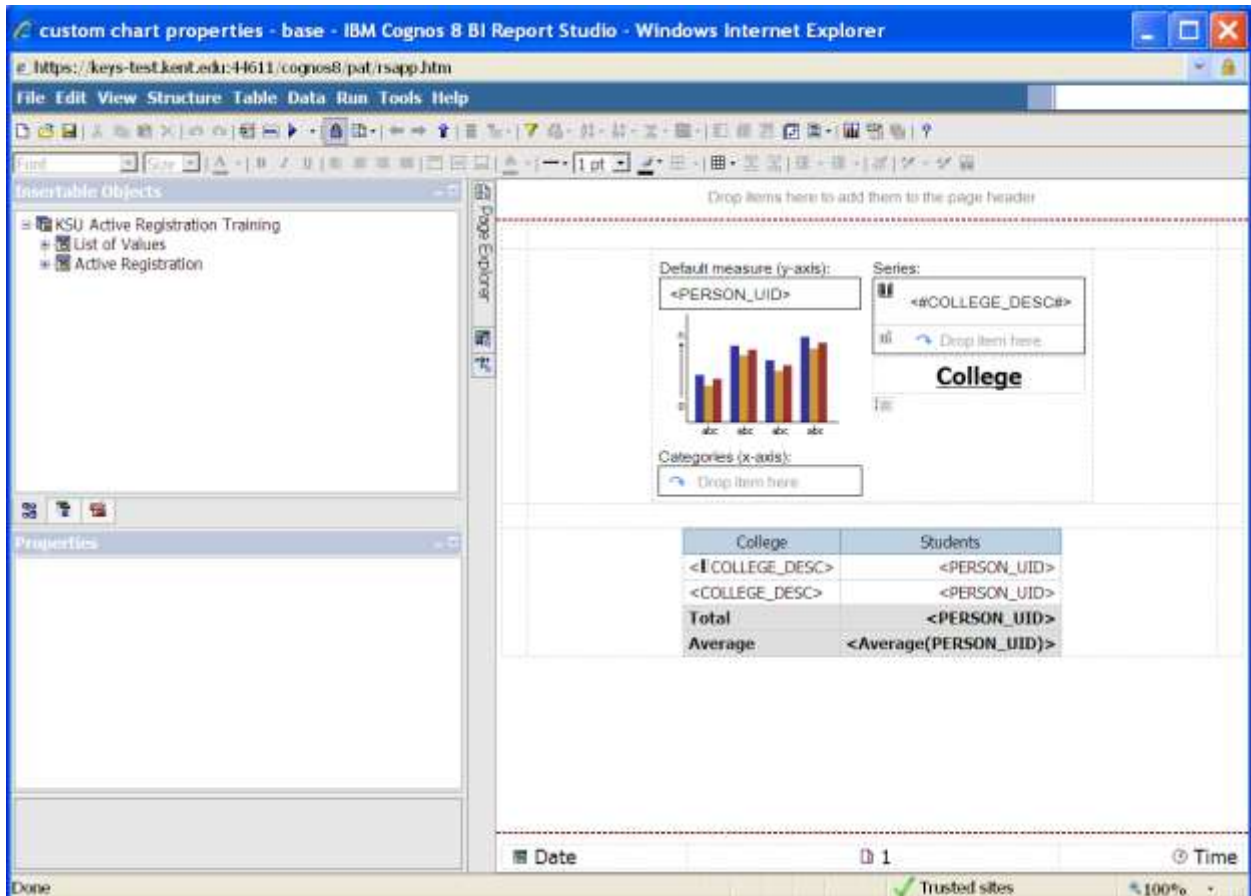


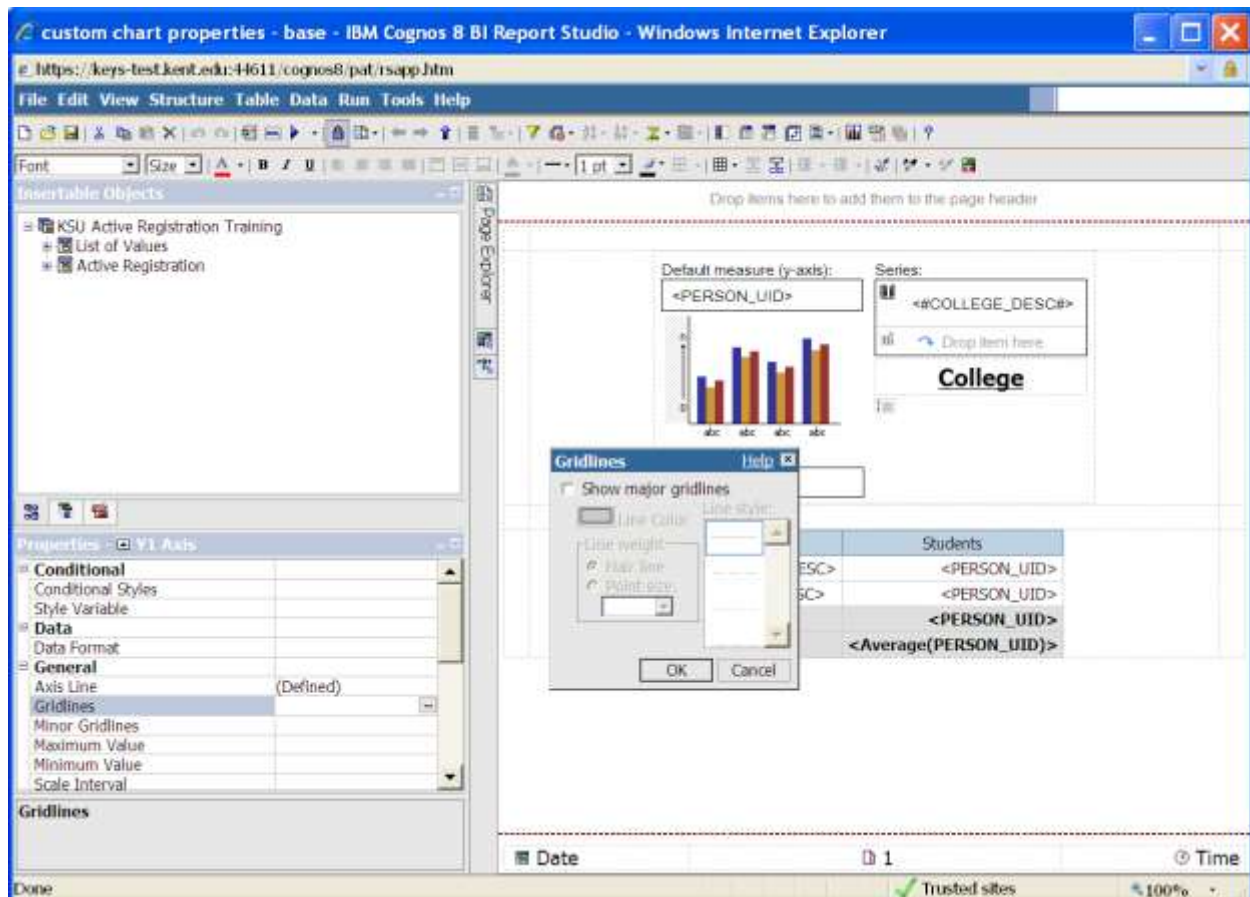


## Adding Custom Properties to Charts



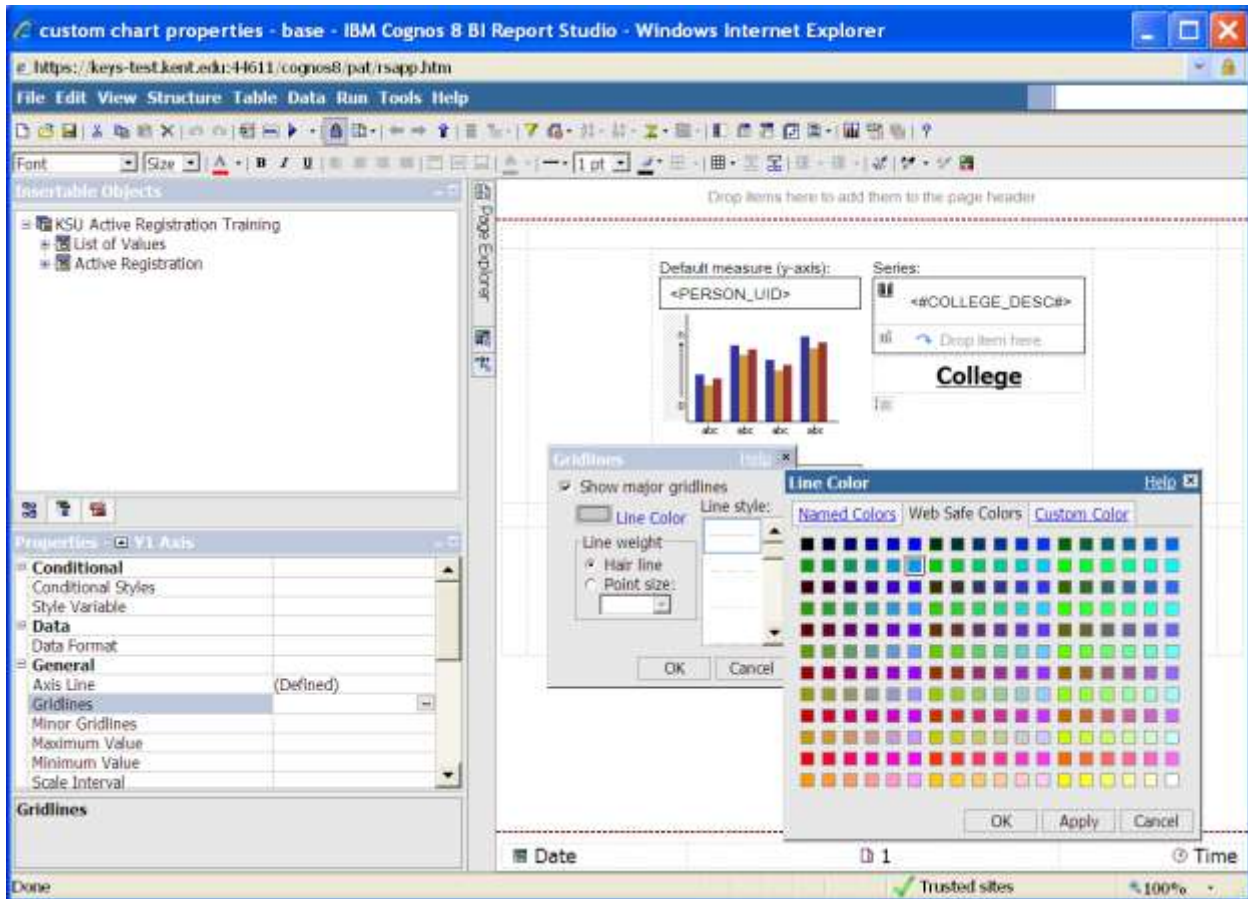
1. Open or create your base report.

## Customs Properties to Chart



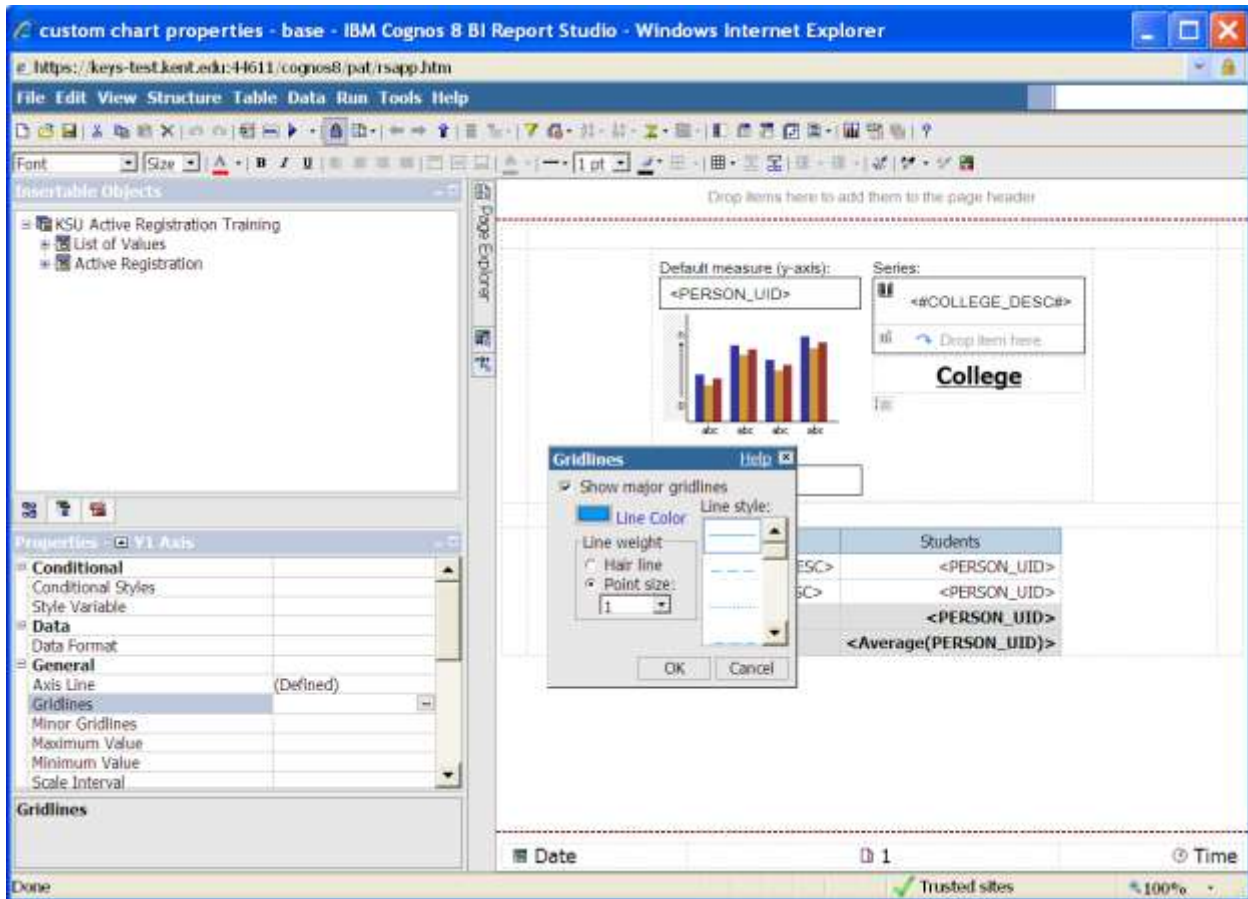
2. On the chart, highlight the chart scale. From the Properties pane, click Gridlines.

## Customs Properties to Chart



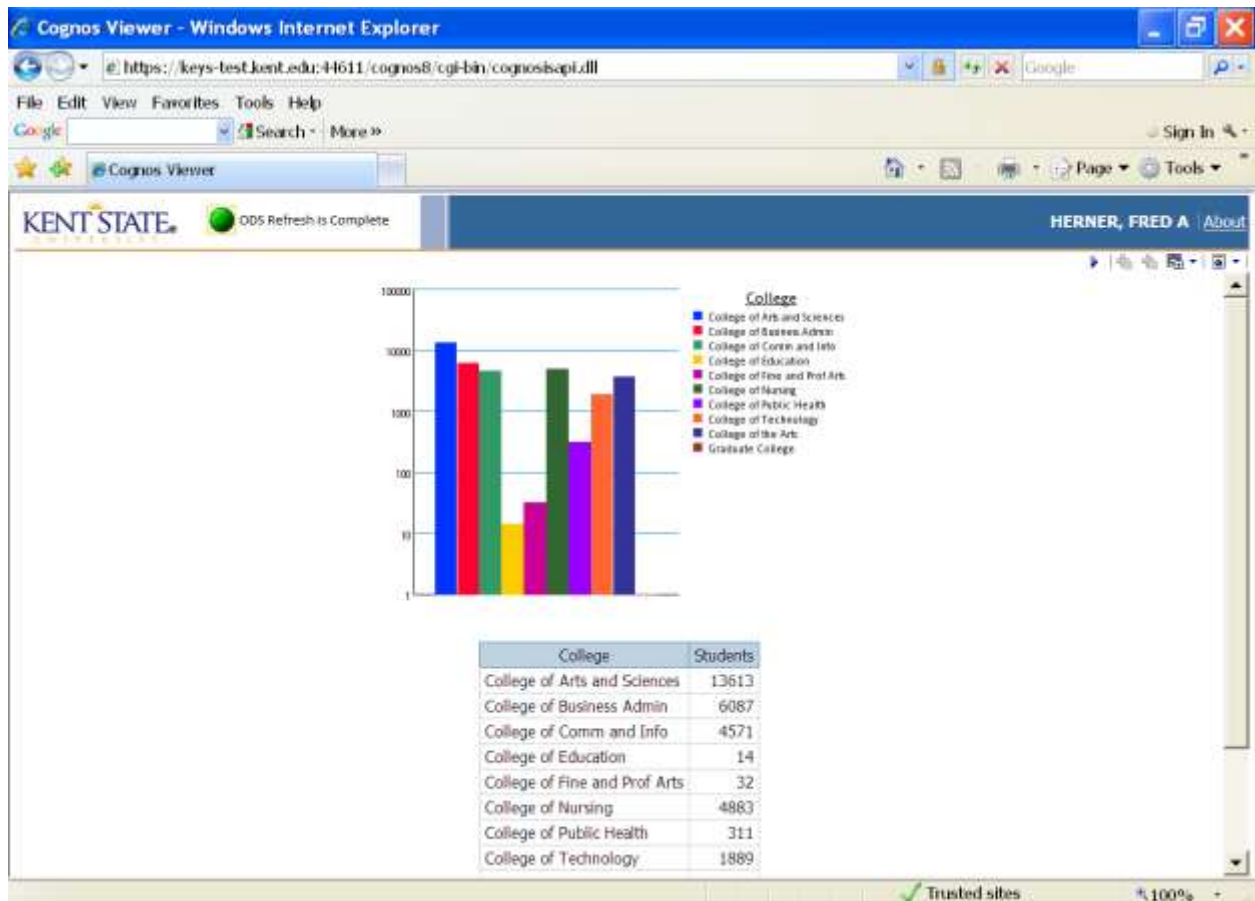
3. Check "Show major gridlines". Click **Line Color** and choose a color.

## Customs Properties to Chart



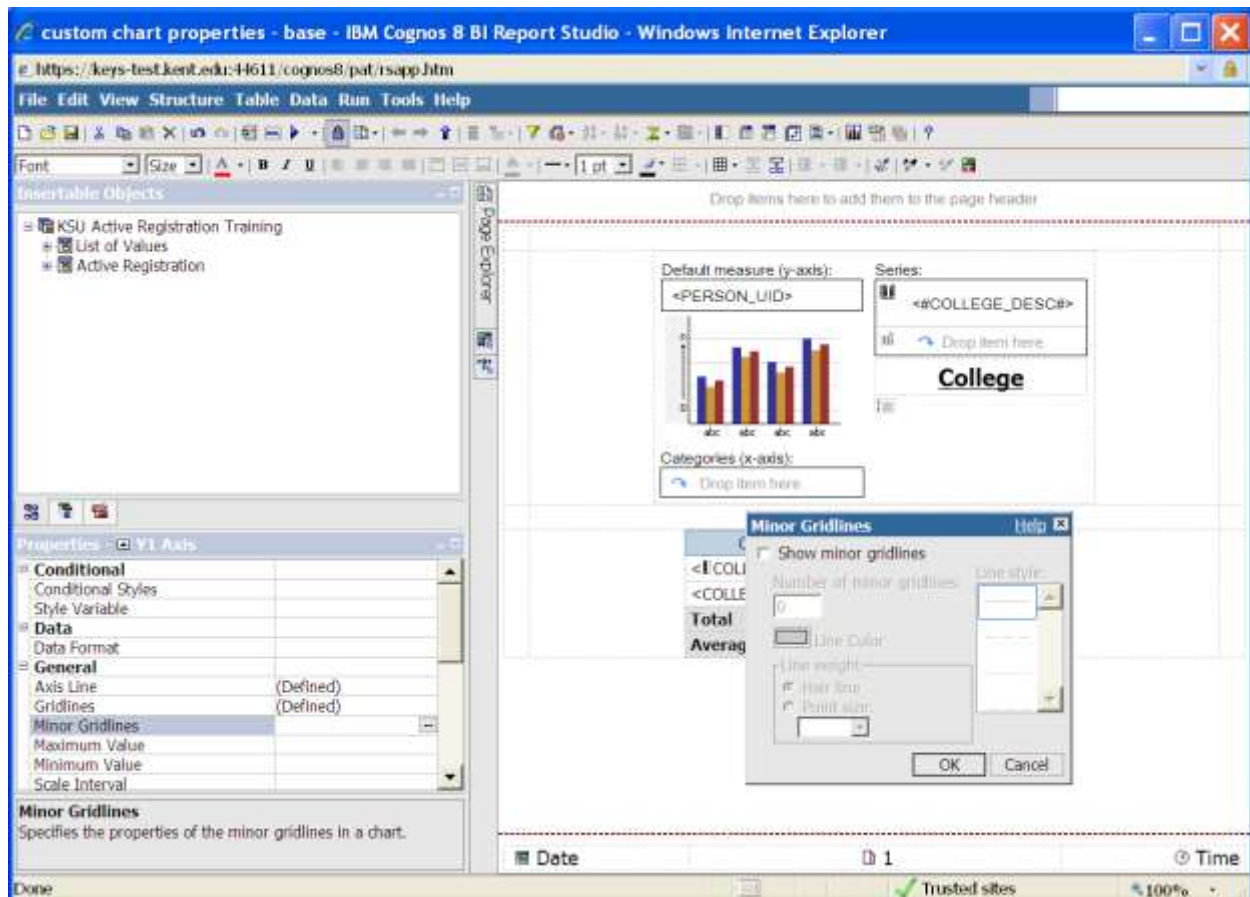
- Set the Point size in the Gridlines box.

## Customs Properties to Chart



5. Run the report

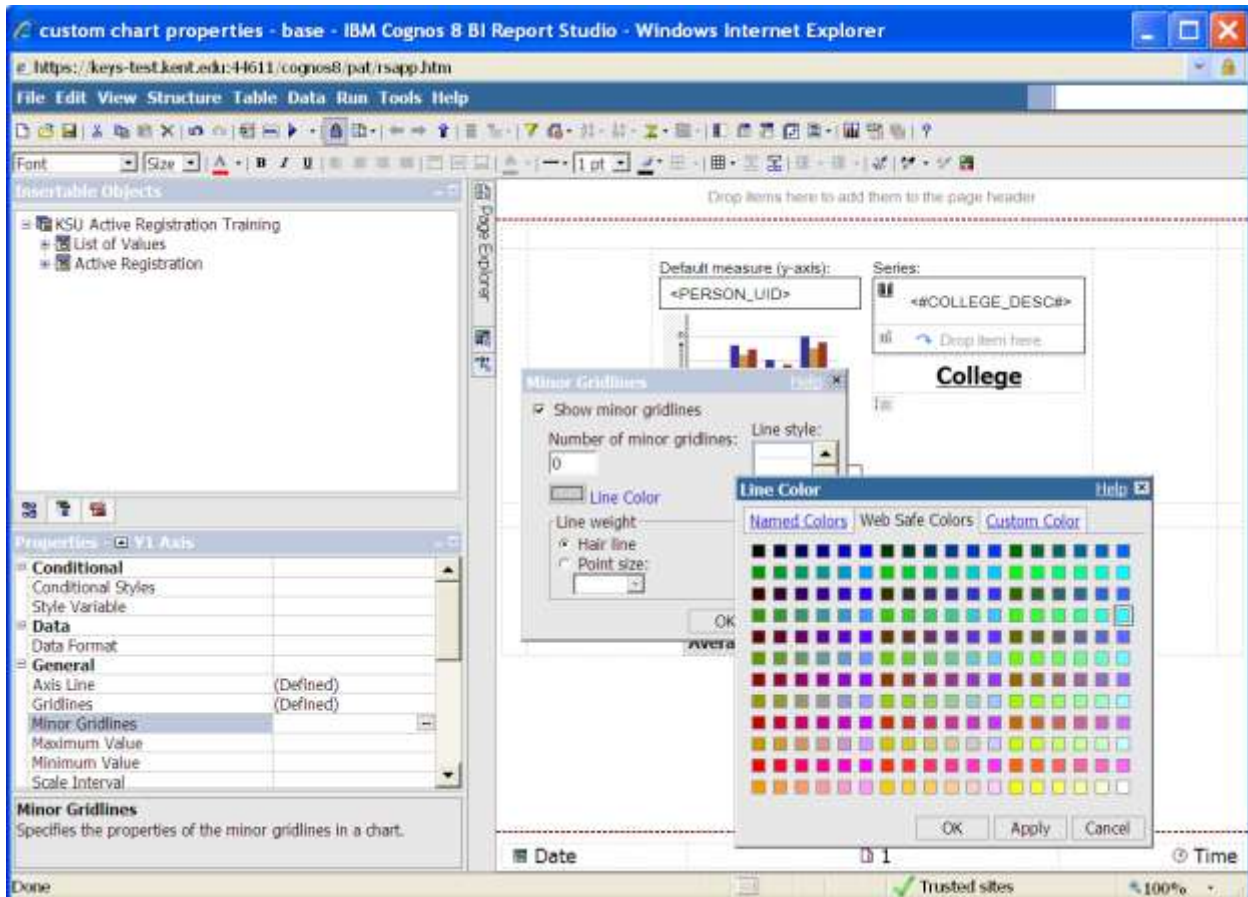
## Customs Properties to Chart



6. On the chart, highlight the chart scale. From the Properties pane, click Minor Gridlines.

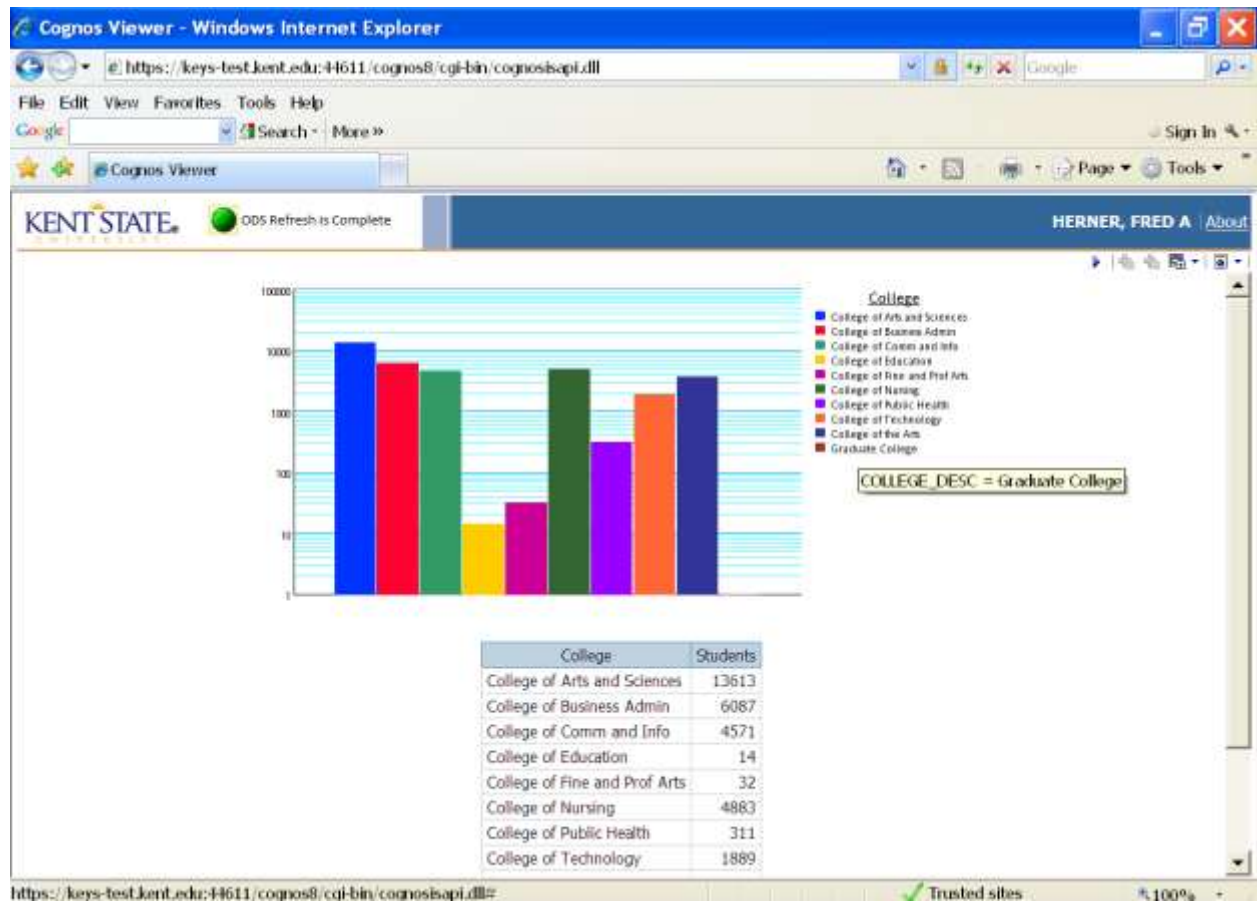


## Customs Properties to Chart



7. Check "Show minor gridlines". Click **Line Color** and choose a color. Select a lighter shade this time.

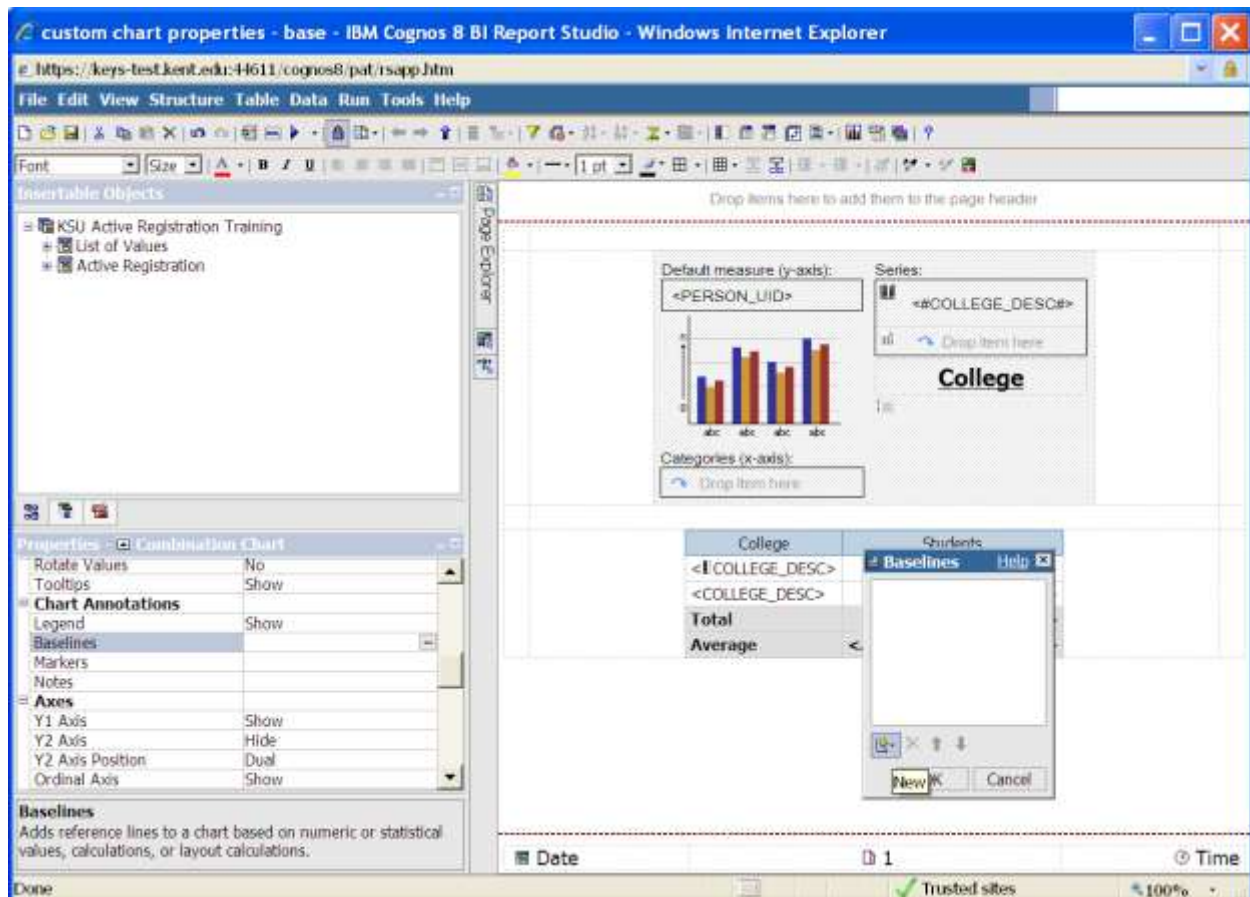
## Customs Properties to Chart



8. Run the report.



## Customs Properties to Chart



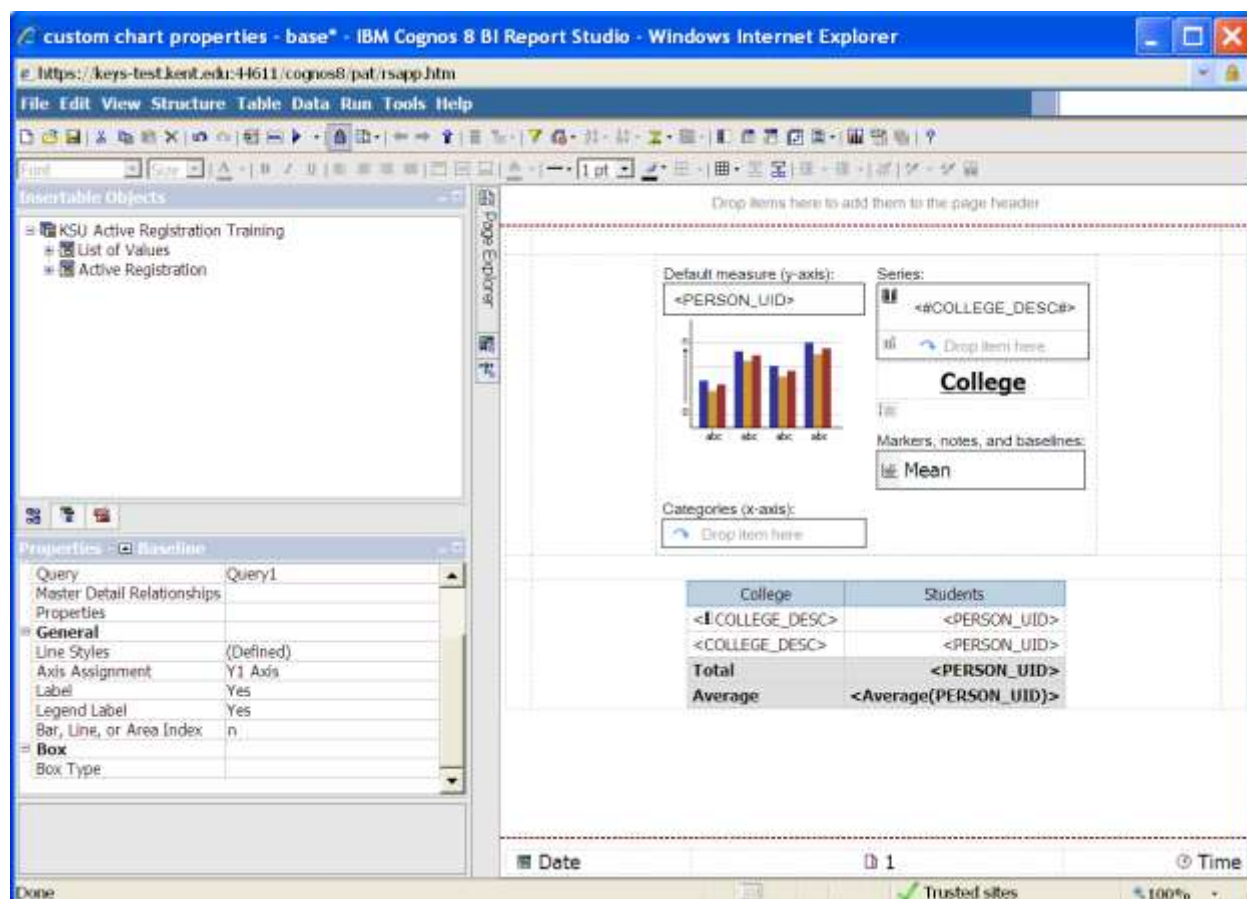
9. Highlight the chart, then Click Baselines.

## Customs Properties to Chart

The screenshot shows the 'custom chart properties - base' window in IBM Cognos 8 BI Report Studio. The window is titled 'custom chart properties - base - IBM Cognos 8 BI Report Studio - Windows Internet Explorer'. The main area displays a bar chart with a legend. The legend shows a series named 'College' with a measure of 'PERSON\_UID'. The chart has a y-axis labeled 'Default measure (y-axis):' and an x-axis labeled 'Categories (x-axis):'. The 'Properties - Combination Chart' panel on the left shows settings for 'Chart Annotations', 'Legend', 'Markers', 'Notes', and 'Axes'. The 'Baselines' panel on the right is open, showing a list of baseline types including 'Mean'. The 'Mean' baseline is highlighted.

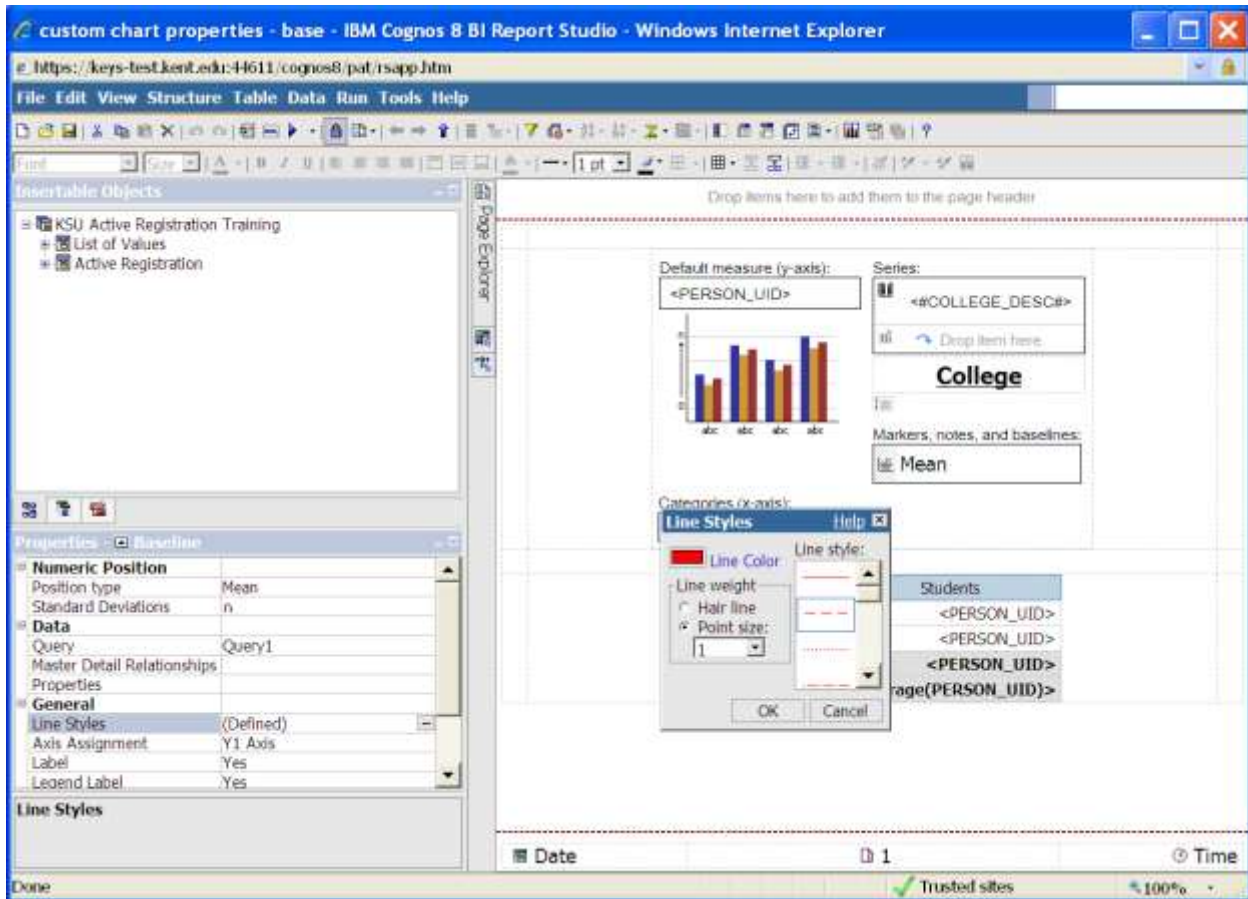
10. Click the New icon and add a **Mean** baseline.

## Customs Properties to Chart



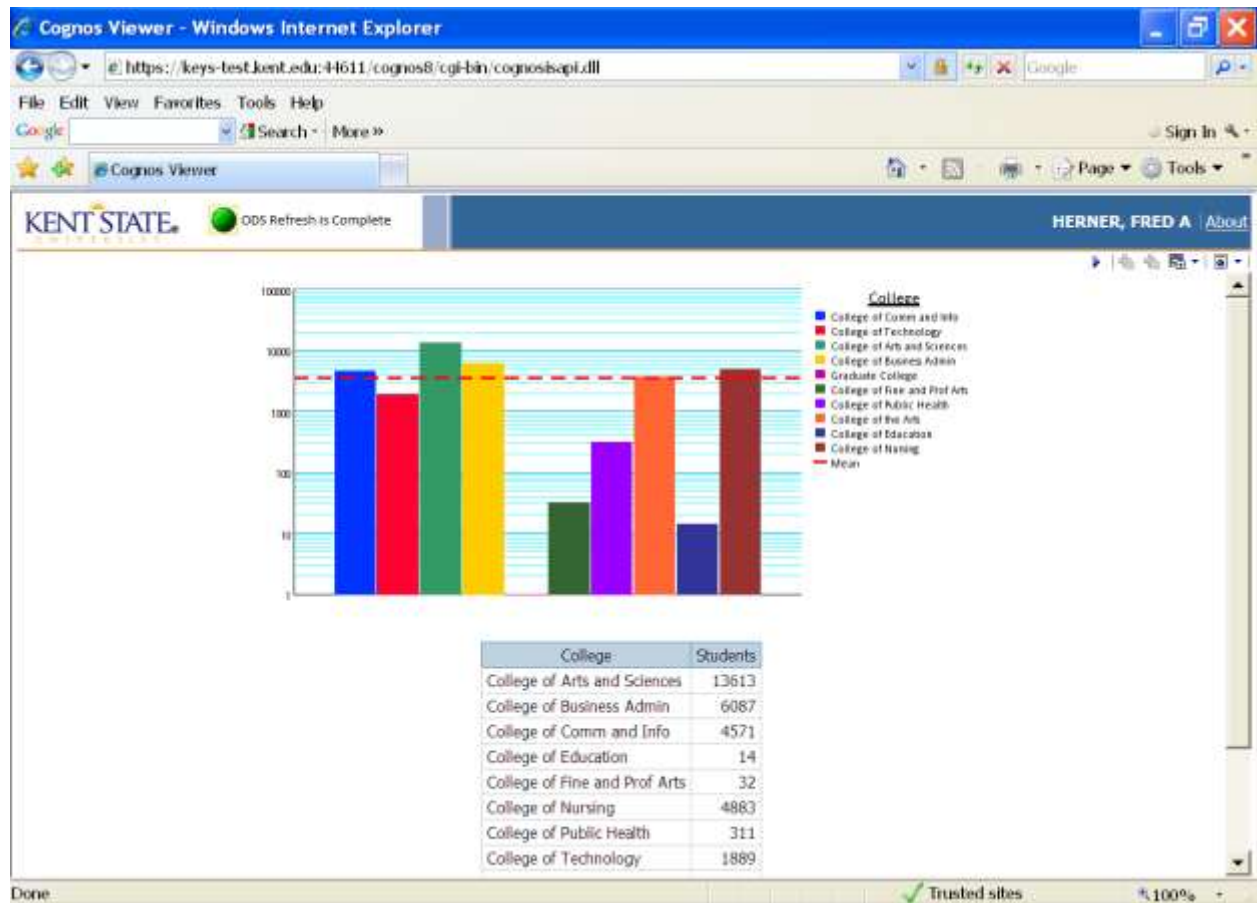
11. A **Markers, note, and baselines** section is now on the chart design.

## Customs Properties to Chart



12. With the area next to Mean highlighted, go to Properties pane and select Line Styles. Choose a line color, style, and weight.

## Customs Properties to Chart



For additional information regarding Cognos, policies and access, or modifications to the ODS, contact the Business Intelligence Team at [cognos@kent.edu](mailto:cognos@kent.edu). For technical assistance, contact the IS Help Desk at 672-HELP (4357).



[www.kent.edu/is/training](http://www.kent.edu/is/training)  
[istraining@kent.edu](mailto:istraining@kent.edu)