

LANDSCAPE  
ARCHITECTURE  
KENT STATE

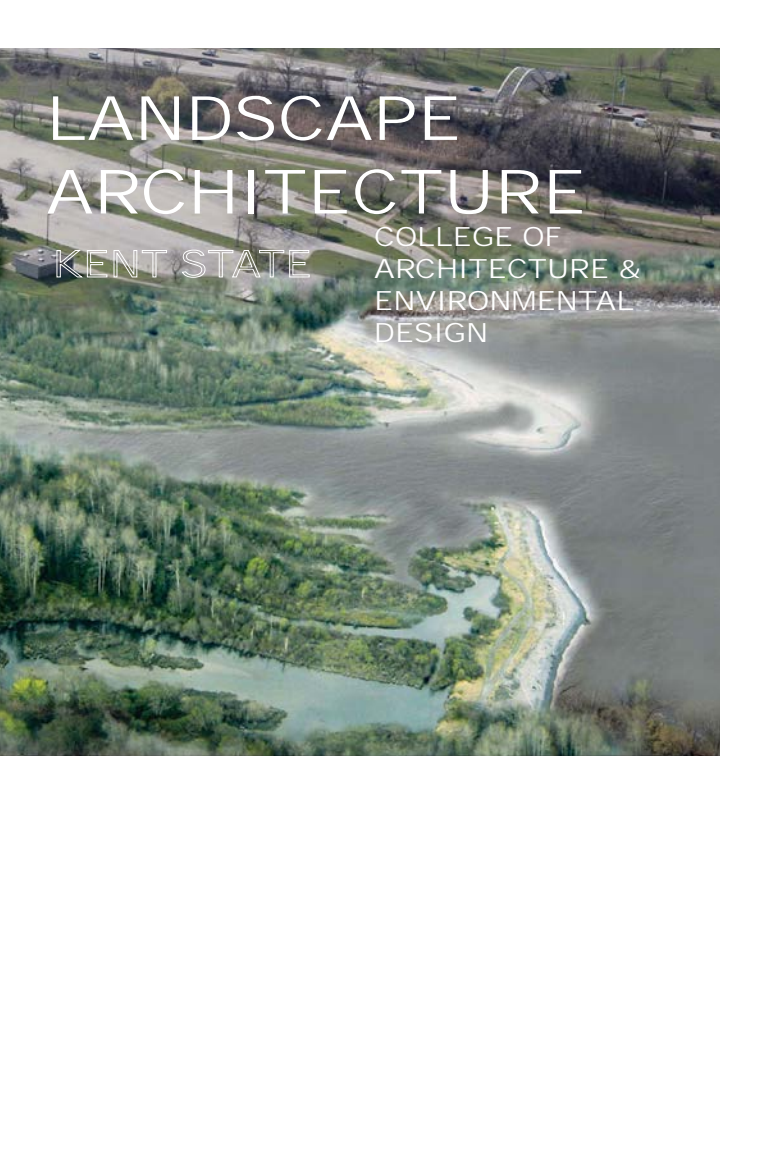
COLLEGE OF  
ARCHITECTURE &  
ENVIRONMENTAL  
DESIGN

An aerial photograph of a winding river or stream flowing through a dense, green forest. A dirt path runs parallel to the water on the left side. In the upper right, a golf course is visible with its characteristic green fairways and sand traps. The overall scene is a lush, natural landscape.

# LANDSCAPE ARCHITECTURE

KENT STATE

COLLEGE OF  
ARCHITECTURE &  
ENVIRONMENTAL  
DESIGN



# LANDSCAPE ARCHITECTURE

KENT STATE

COLLEGE OF  
ARCHITECTURE &  
ENVIRONMENTAL  
DESIGN

# WHAT IS LANDSCAPE ARCHITECTURE?

*“Landscape architects analyze, plan, design, manage, and nurture the built and natural environments. Landscape architects have a significant impact on communities and quality of life. They design parks, campuses, streetscapes, trails, plazas, and other projects that help define a community.”*

-American Society of Landscape Architects





*Naval Cemetery Park, Brooklyn, New York*



PRESENTATION HISTORY  
DIO MORPHOLOGIES  
CONSTRUCTION SCASLA  
RE EXPERIMENTATION  
LA FIELD AND TRAVEL  
STORY INFORMATION  
GIES ENGINEERING  
ASLA SITE VISITS  
ATION MODELS PLANTS  
STORY INFORMATION

## **STUDIO CULTURE**

S STUDIO CULTURE  
ODELS PLANTS FIELD  
PRESENTATION HISTORY  
OLOGIES ENGINEERING

# PLAYHOUSE SQUARE

CLEVELAND URBAN DESIGN COLLABORATION

THE GARDEN & CSU

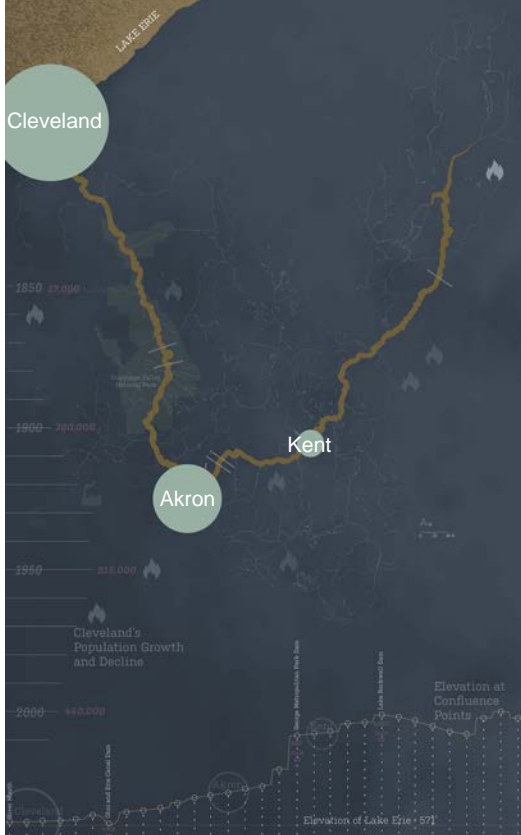
GO  
EAST  
ARTS  
COUNCIL



*Cleveland Studios, Playhouse Square, Downtown Cleveland*

# NAVIGATING THE CUYAHOGA

## REGIONAL CONTEXTS AND LARGER SYSTEMS



*Cleveland Studios; Relation to Akron and Kent*



*Student Workspaces, Cleveland Studio*



*Gallery, Cleveland Studio*



# EXTENDED CLASSROOM CULTURE

CAED



CUDC LECTURE  
SERIES



CAED LECTURE  
SERIES

Lecturers: Adam Nicklin: Public Work: How We  
Jill Desimini: Cyclical City - Stories Of Urban Tra  
Margie Ruddick: Wild By Design I Fall 22





Work I Spring 23  
Transformation I Fall 22

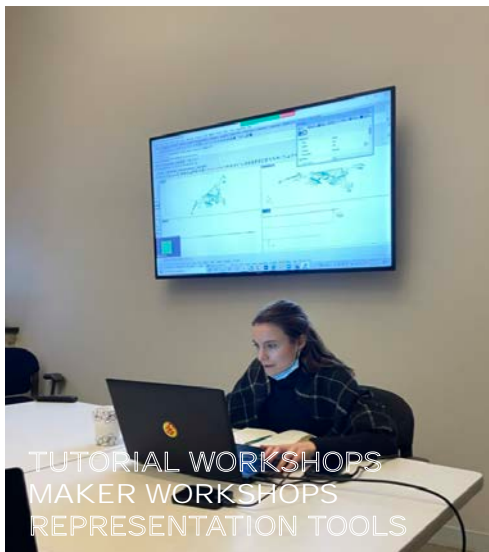
# LEARNING CULTURE



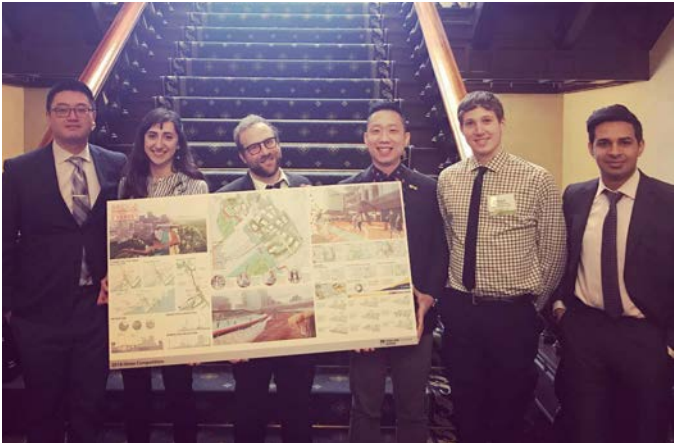
# STUDIO GUEST CRITICS

*Spring 21 - Fall 23*

*William Shriver - PhD candidate, UVA, Anna Enderle – Adjunct and DERU, Abby Feldman - Adjunct and RLA, Surrounding Studio, Steve Rugare - CAED, Joshua Brooks - PLA, Sasaki, Sheryl Fishel - RLA, PLA, Rodgers Consulting, Xiwei Shen - PhD Candidate Clemson University Karen Lutsky, Assistant Professor of Landscape Architecture, University of Minnesota, Matt Hills, Principle OHM Advisors, Sean Burkholder- Assistant Professor of Landscape Architecture, UPENN, Andrew Sargent- Cleveland Neighborhood Progress, Karis Tzeng – Midtown Cleveland Org, Sheryl Fishel- RLA, PLA, Rodgers Consulting, Maci Nelson. Founder, the Landscape Nerd, Christian Lynn. Adjunct Faculty- AECOM, Margie Ruddick - Principal Owner of Margie Ruddick Landscape , Patty Lundeen Hume - Principal Owner of Break Urban, Tony Paradowski - Principal Owner of Superjacent, Sam Harris - director of Culture Horticulture in Los Angeles, Takako Tajima - USC faculty in Arch / Landscape, Chunyan Zheng. Senior Urban Designer at the CUDC, Jason Kentner, RLA, Associate Professor of Practice OSU, John Harper, RLA*



# INTERDISCIPLINARY CULTURE



*Urban Land Institute Student Hines Competition; Union Club Presentation*



*Urban Land Institute Student Hines Competition; Union Club Presentation*

# STUDENT CHAPTER ASLA



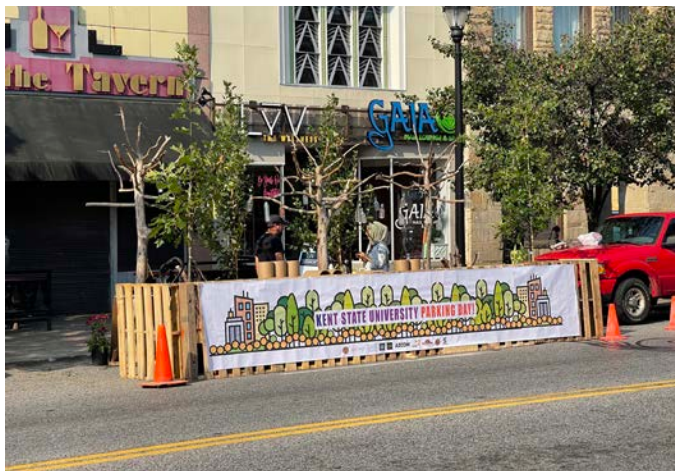
*2023 Community Shred Project*



*2018 Ohio Chapter ASLA Awards Gala*



# PARKING DAY



*Parking Day Fall 22, Ohio City, Cleveland, OH*

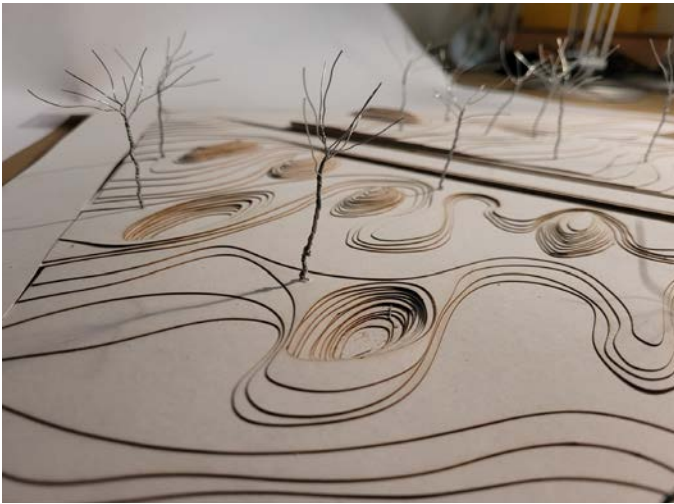


*Parking Day Fall 21, East 9th Street, Cleveland, OH*

1	2	3	4	5	6	7	8	9	10	11	12	13	14	15	16	17	18	19	20
21	22	23	24	25	26	27	28	29	30	31	32	33	34	35	36	37	38	39	40
41	42	43	44	45	46	47	48	49	50	51	52	53	54	55	56	57	58	59	60
61	62	63	64	65	66	67	68	69	70	71	72	73	74	75	76	77	78	79	80
81	82	83	84	85	86	87	88	89	90	91	92	93	94	95	96	97	98	99	100
101	102	103	104	105	106	107	108	109	110	111	112	113	114	115	116	117	118	119	120
121	122	123	124	125	126	127	128	129	130	131	132	133	134	135	136	137	138	139	140
141	142	143	144	145	146	147	148	149	150	151	152	153	154	155	156	157	158	159	160
161	162	163	164	165	166	167	168	169	170	171	172	173	174	175	176	177	178	179	180
181	182	183	184	185	186	187	188	189	190	191	192	193	194	195	196	197	198	199	200
201	202	203	204	205	206	207	208	209	210	211	212	213	214	215	216	217	218	219	220
221	222	223	224	225	226	227	228	229	230	231	232	233	234	235	236	237	238	239	240
241	242	243	244	245	246	247	248	249	250	251	252	253	254	255	256	257	258	259	260
261	262	263	264	265	266	267	268	269	270	271	272	273	274	275	276	277	278	279	280
281	282	283	284	285	286	287	288	289	290	291	292	293	294	295	296	297	298	299	300
301	302	303	304	305	306	307	308	309	310	311	312	313	314	315	316	317	318	319	320
321	322	323	324	325	326	327	328	329	330	331	332	333	334	335	336	337	338	339	340
341	342	343	344	345	346	347	348	349	350	351	352	353	354	355	356	357	358	359	360
361	362	363	364	365	366	367	368	369	370	371	372	373	374	375	376	377	378	379	380
381	382	383	384	385	386	387	388	389	390	391	392	393	394	395	396	397	398	399	400
401	402	403	404	405	406	407	408	409	410	411	412	413	414	415	416	417	418	419	420
421	422	423	424	425	426	427	428	429	430	431	432	433	434	435	436	437	438	439	440
441	442	443	444	445	446	447	448	449	450	451	452	453	454	455	456	457	458	459	460
461	462	463	464	465	466	467	468	469	470	471	472	473	474	475	476	477	478	479	480
481	482	483	484	485	486	487	488	489	490	491	492	493	494	495	496	497	498	499	500
501	502	503	504	505	506	507	508	509											



0	1	2	3	4	5	6	7	8	9	10	11	12	13	14	15	16	17	18	19	20	21	22	23	24	25	26	27	28	29	30	31	32	33	34	35	36	37	38	39	40	41	42	43	44	45	46	47	48	49	50
51	52	53	54	55	56	57	58	59	60	61	62	63	64	65	66	67	68	69	70	71	72	73	74	75	76	77	78	79	80	81	82	83	84	85	86	87	88	89	90	91	92	93	94	95	96	97	98	99	100	





### *Landscape Architecture Design Studio 01*

The studio has been looking at built land art projects to explore earthwork patterning and topographic manipulation for the midterm. Students explore how a designer can create meaning and experiences that immerse the user. That landform creates a powerful symbolic tie between people and the environment by engaging our perceptual and psychological responses.

The negotiation of circulation through the site is essential as it relates to the body moving through space. The intention is to create an optimum space for visitors to explore the ideas of landscape experience, reflect and meditate on life and design a space that grants shared experiences between users by exploring meaning in the design of the garden.

Instructor: Associate Professor Cat Marshall

# MORPHOLOGIES







# MORPHOLOGIES





### *Landscape Architecture Design Studio 03*

This studio investigates the notion that rivers were once the framework for our industrial cities and served the needs of our economic processes, yet how should these critical systems be used for future development patterns to re-create sustainable hydrological infrastructure and re-connect a community back to the river?

Instructor: Assistant Professor Charles Frederick







### *Landscape Architecture Design Studio 04*

This studio will wonder and theorize on the futures for urban landscapes in Cleveland, Ohio that are currently facing environmental risk if they are transformed into a Forest City.

The benefits of trees as described in the Western Reserve Land Conservancy's Financing the Forest City report include descriptions of how trees improve public health and safety, add economic value to properties, meet environmental challenges, and improve our natural world and its wildlife. This studio builds upon this body of knowledge and examines the value of trees, not just a natural resource but also a cultural resource.

Cleveland has been known for its tree canopy throughout its urbanization, but the canopy has had a steady decline since the Industrial Revolution. Through creation of the City of Cleveland's aggressive tree canopy plans, monuments like the Liberty Oaks Memorial and Moses Cleveland Trees, the city is encouraging restoration and protection of the Cleveland canopy.

Instructor: Maci Nelson, MLA, ASLA

# BAT CAMP

Summer Roosting at Acorn  
Reservation for the Indiana



Bat Camp by Katherine Kelleher (MLA19) provides habitat for the endangered Indiana Bat, *Myotis sodalis*. The introduction of the Indiana Bat to Acacia has mutual benefits for several diverse species. The Bat Camp structures create a habitat which supports life for plants, insects and people at Acacia. The design addresses and enhances the broader ecosystem as a shared space. The three Bat Camp structures mimic decaying trees. It is in these structures that the bats will live mid-March through mid-October

Instructor: Professor Reid Coffman PhD.









# EXPERIMENTATION



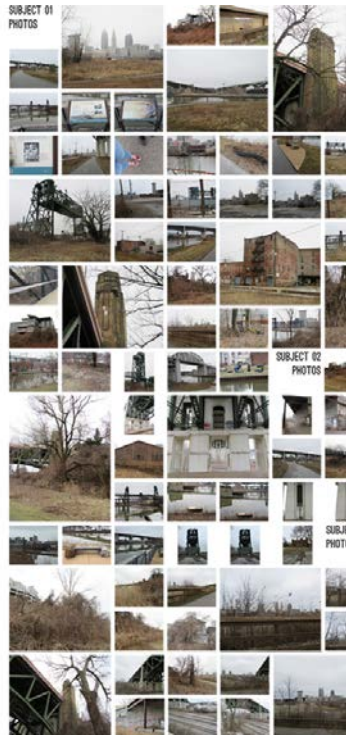
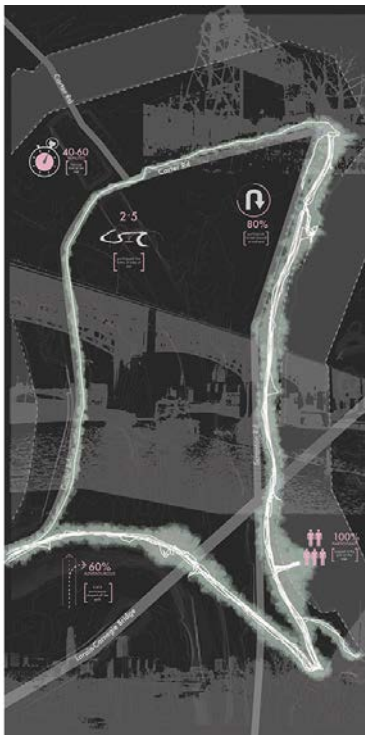
*Capstone, Where Land Meets Water By Conner Karakul (MLA18)*

Instructor: Assistant Professor Charles Frederick



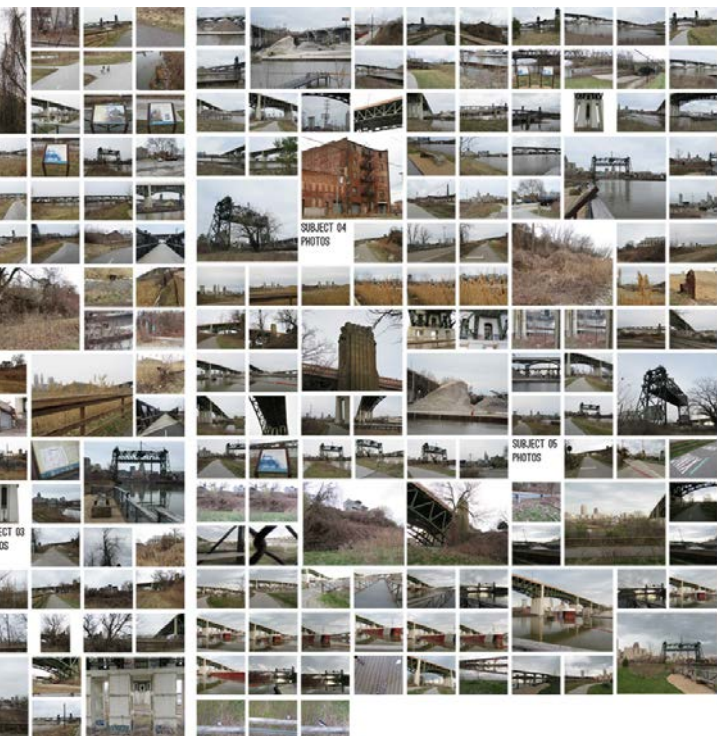


Explores two scales of urban waterways and shorelines the Doan Brook and Lake Erie, and how they meet. Revealing historic degradation and lack of access and an opportunity to celebrate and reconnect Cleveland to its greatest asset.



*Capstone Scenography: Scranton Peninsula by Anna Enderle (MLA2019)*

Research investigated why the industrial riverfront in Cleveland, Ohio offers a variety of experiences based on its layered spaces. The study challenges the typical “objective view from nowhere.” Subjects took photographs of the landscape or elements they felt needed documenting, followed by questions about what they noticed while we walked around the site. Visual analysis of the subject’s photographs to identify shared landscape experiences.



The second set organized the spatial qualities of areas where participants paused or noted. Finally, the landscape elements were classified according to unique qualities, looking at the landscape experience.

Faculty Advisor: Associate Professor Cat Marshall





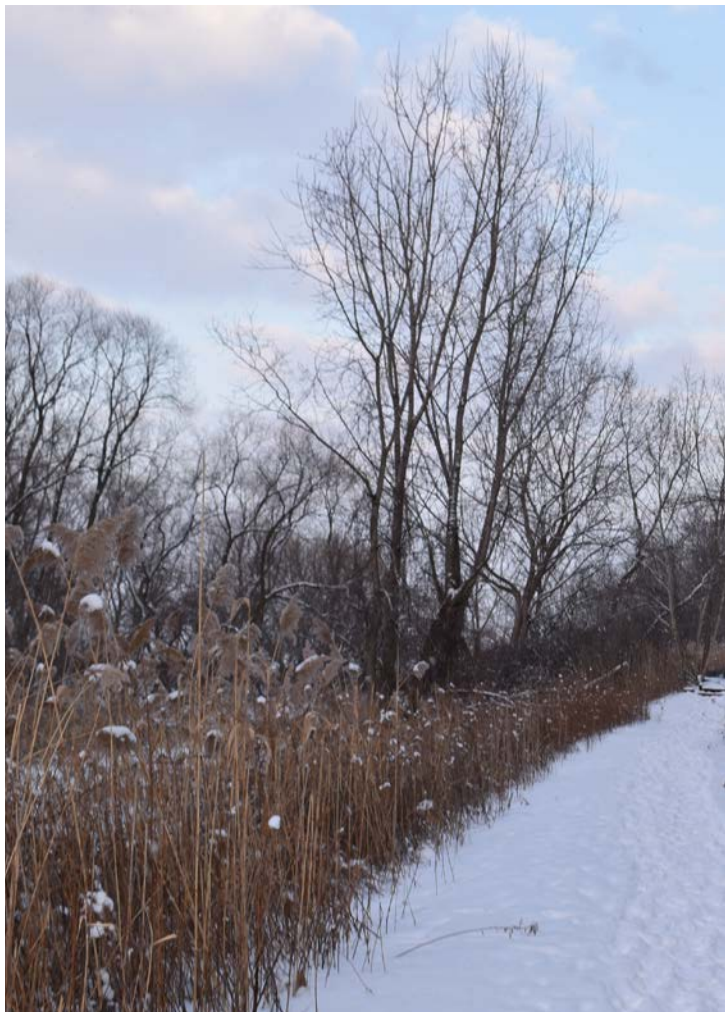


MODELS REPRESENTATION  
INFORMATION STUDY  
ENGINEERING CONSTRUCTION  
VISITS CULTURE EXPERIMENTAL

## FIELD AND TRAVEL

REPRESENTATION HIS  
STUDIO MORPHOLOGIES  
CONSTRUCTION SCASL  
CULTURE EXPERIMENTAL  
REPRESENTATION HIS  
MORPHOLOGIES ENGINE  
SCASL SITE VISITS CULT  
MODELS PLANTS F  
REPRESENTATION HIS  
MORPHOLOGIES ENGINE







*Drawing the Site, Lakefront Nature Preserve, Cleveland, OH*



Fall 21 and Fall 22 welcome retreat at Rocky River Reservation. A welcome event with exploring in the landscape, including walking field ecology tour and field sketching.







*Plants and Planted Forms, fieldwork drawing, Brecksville, OH*

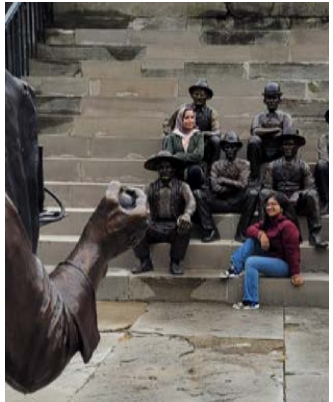


*Forest Plant Identification, Fall 21, Cuyahoga Valley National Park*





Lake Erie/Ohio River Fall 19 Great Lakes Workshop Fieldtrip explored five unique water landscapes in five days including Erie, Pa, Buffalo, NY and Allegheny National Forest, Pittsburgh, Pa.



Lake Erie/Ohio River Fall 22 Great Lakes Workshop Fieldtrip explored three unique water landscapes in three days including Erie, Pa, Buffalo, NY and Pittsburgh, Pa





*Great Black Swamp*

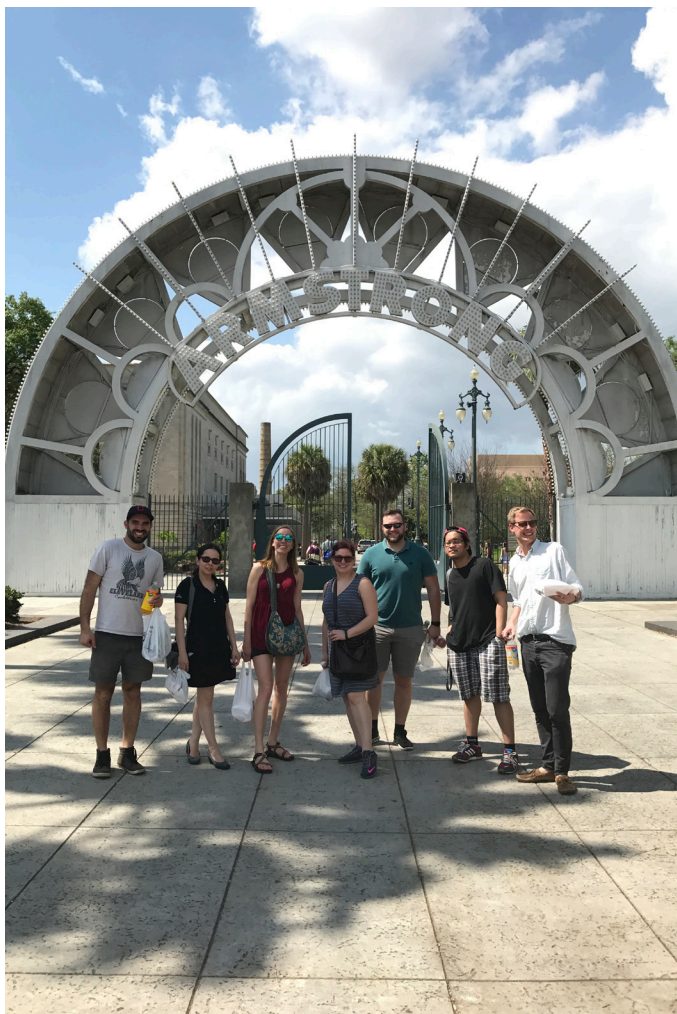


*Pinery Provincial Park*

*Greatlakes Landscape Workshop Fall 19*



*Mississippi River Basin Model, Jackson, Mississippi*



*Armstrong Park, New Orleans, Louisiana*







*Brooklyn Grange, Cities Alive Conference, New York*



*INDEX Studio, Queretaro, Mexico*





*Chicago Botanical Garden, Living Architecture Studio, Chicago*





*Bay Waterfront, Havana, Cuba*

MODELS REPRESENT  
INFORMATION STUDY  
ENGINEERING CONSTRUCTION  
VISITS CULTURE EXPERIMENTATION  
PLANTS SCASLA FIELD

## INFORMATION HISTORY

STUDIO MORPHOLOGIES  
CONSTRUCTION SCASLA  
CULTURE EXPERIMENTATION  
REPRESENTATION HISTORY  
MORPHOLOGIES ENGINEERING  
SCASLA SITE VISITS  
EXPERIMENTATION MORPHOLOGIES  
AND TRAVEL REPRESENTATION  
INFORMATION MORPHOLOGIES





# LANDSCAPE ARCHITECTURE KENT STATE

The Master of Landscape Architecture program prepares graduates for active, creative, leadership roles in the landscape architecture profession through inclusive and interdisciplinary design methodologies, issues surrounding urban landscapes, and community engagement.

Our LAAB- accredited Master of Landscape Architecture [MLA-1] is intended for individuals who have a bachelor's degree with a major other than a Bachelors in Landscape Architecture.

The College of Architecture and Environmental Design is dedicated to providing an education that prepares graduates for leadership in a rapidly changing world.

The Masters of Landscape Architecture program at Kent State's CAED is offered at the Kent State University's Cleveland Studio Site located in the urban core of Cleveland, Ohio at Playhouse Square.

Located in an urbanized landscape edging the international waters of Lake Erie offers students unique local laboratory to study global landscape issues including; reclamation of urban vacancies, infrastructure systems, living architecture, natural resources and water quality for landscapes of health and social justice.

Within a curriculum context, learning about landscape architecture is best accomplished through exploration of design in a studio-based setting. Participating in interdisciplinary and collaborative team relationships. Through a thorough understanding of the process of design, students will be prepared to conduct inquiry into a multitude of issues, both inside and outside the profession, and to contribute to an expanded vision of landscape architecture.

Within the context of contemporary higher education, studio-based landscape architectural education can serve as a model for those interested in hands-on, active learning. The program goals are to instill, disseminate and to apply knowledge to our profession.

The goals of the Landscape Architecture program address contemporary issues and problems in practice by redefining the potential of landscape architecture. involving the discovery, integration, application and teaching of landscape architectural ideas and knowledge to a diverse audience.

The Landscape Architecture program promotes the following objectives and values:

- + Create leaders for the profession;
- + Sensitive understanding of the environment;
- + A design process informed by critical analysis, conceptual thinking and artistic expression;
- + Understanding of natural elements, cultural components, and historical evolutions of the environment;
- + An understanding of and facility with current technological methods through which landscapes are inventoried, analyzed, understood, represented, built, and altered;
- + A strong connection between our profession and allied design professions and
- + Multi-cultural experiences derived from off-campus travel and work experiences.

# MASTER OF LANDSCAPE ARCHITECTURE I

## FIRST YEAR: GROUNDWORK

to introduce base knowledge of landscape architecture and create a foundation for design and professional awareness. The objective for this year is to acquire fundamental knowledge through an introduction to design, history, theory, visualization, plants, ecology (employing precedents), graphics, modeling, field observations, and design process exploration.

*+ Local Cleveland exploration and Regional  
Travel Experiences such as Akron and  
Youngstown*



## SECOND YEAR: MORPHOLOGIES

to explore the various scales and responsibilities of landscape architecture and articulate critical elements of infrastructures, systems, and urban forms. The objective for this year is to apply knowledge in creative problem-solving situations through design, construction, engineering, research, and practice with documentation, analysis, mapping, technical proficiency, and design process integration.

- + Regional Travel Experiences include Great Lakes Trip and Lake Erie Basin*
- + National Travel includes Miami, New Orleans and Buffalo*
- + Future trips could include Chicago, St. Louis and Toronto*

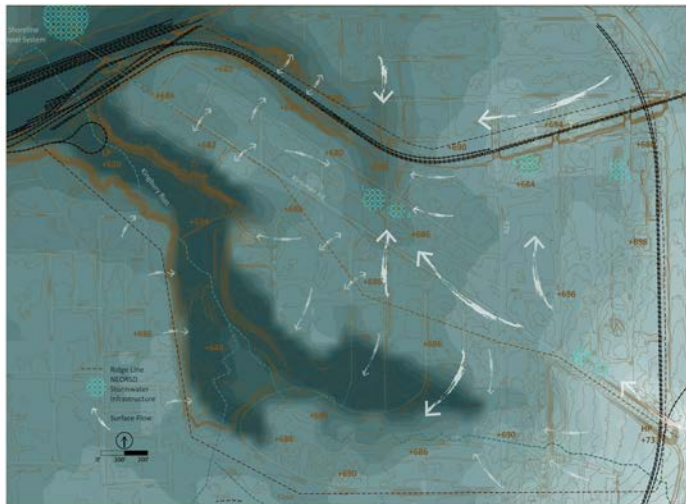
## THIRD YEAR: EXPERIMENTATION

to inquire into an approach that integrates design, theory, history, technical knowledge, and life experiences into a comprehensive design strategy. The objective for this year is to expand the professional knowledge base with case studies, literature reviews, advanced graphics, urban design methods, and design process synthesis.

This sequence helps frame a rigorous design methodology for a student and advances their professional development, interdisciplinary skills, and engagement experiences.

*+ National and International Experiences include Chicago, New York City, Cuba, Colombia & Mexico*

Capstone - Tending Health through productive Conservation as the mode to practice Entanglement  
by Erin Laffey



## Vacant Land Typologies

Typology	Area (sq. ft.)				
	Flat	Building Mounds	Paved	Unpaved	Total
Flat	10	10	10	10	40
Building Mounds	10	10	10	10	40
Paved	10	10	10	10	40
Unpaved	10	10	10	10	40
Total	40	40	40	40	160



Right of ways



Bus/rapid and New Paths



# MASTER OF LANDSCAPE ARCHITECTURE I CURRICULUM

## *Year 1 GROUNDWORK*

## *Year 2 MORPHOLOGIES*

## *Year 3 Experimentation*

Fall

Studio 1 - Garden

Spring

Studio 2 - Neighbor

Fall

Studio 3 - System

Spring

Studio 4 - Urban I

Fall

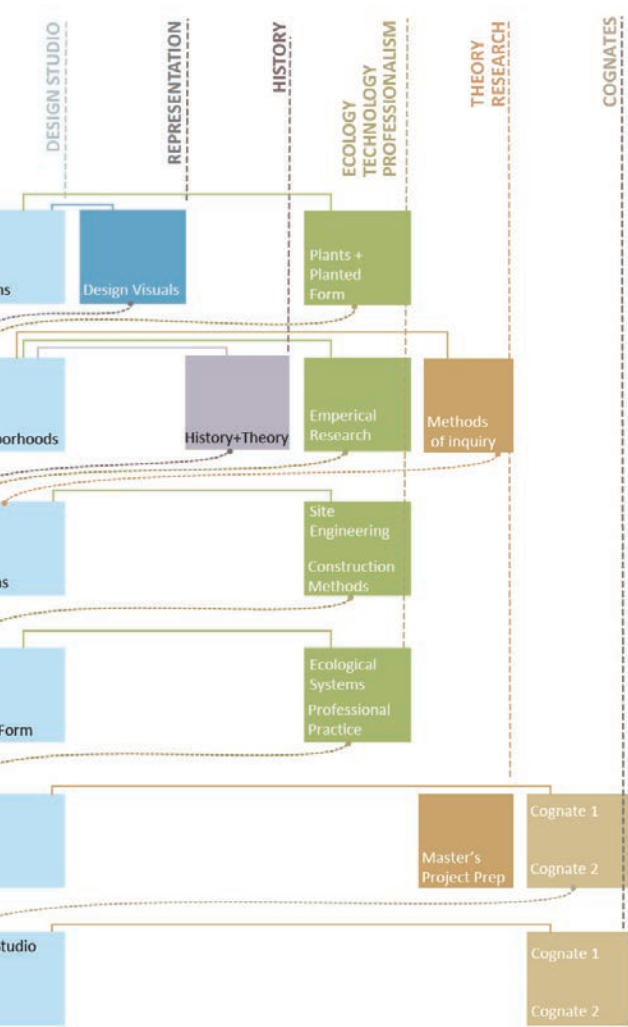
Studio 5 - Design

Spring

Master's Project S

or

Studio 6 - Design





# MASTER OF LANDSCAPE ARCHITECTURE II

The MLA II is a post-professional program that allows students to develop new knowledge through research and design, and to provide professionals with the opportunity for specialization in an area of their choosing. The MLA II does not carry accreditation. The plan of study is developed through the guidance of the Landscape Architecture Program Coordinator. Students in the Master of Landscape Architecture II program must earn at least a total of 60 credit hours.



*Urban Forestry Workshop 2023*

LANDSCAPE  
ARCHITECTURE  
FACULTY

***Coordinator of Landscape Architecture***

Cathy Soergel Marshall ASLA, CELA  
Associate Professor of Landscape Architecture

Charles Frederick, ASLA, CELA  
Assistant Professor of Landscape Architecture

CAED SUPPORT FACULTY

Reid Coffman PhD, ASLA, CELA, GRHC  
Associate Professor of Landscape Architecture

ADJUNCT FACULTY

Christian Lynn, PLA, ASLA  
Jayme Schwartzberg, RLA, ASLA  
Maci Nelson, MLA, ASLA  
Anna Enderle, MLA, ASLA

To enhance the program and fulfill its interdisciplinary mission, faculty members from allied design programs in the CAED teach in their areas of expertise that overlap with the landscape architecture curriculum.

To strengthen professional practice knowledge in service of the program's mission, Landscape Architecture also employs licensed professionals who are recognized for their accomplishments in practice as adjunct faculty.

STUDENT  
PROFILE





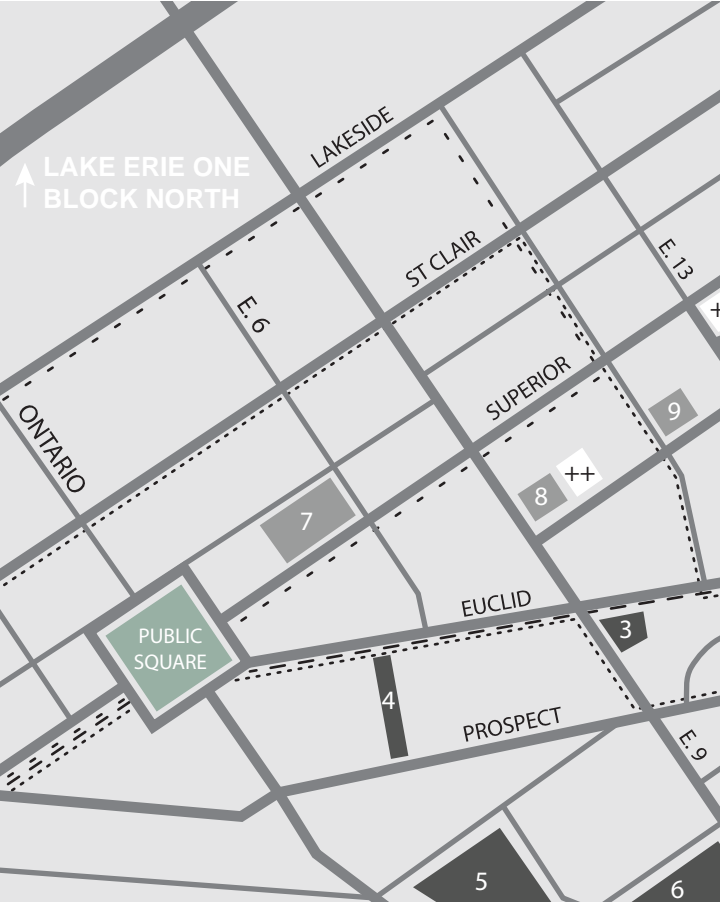
Saba Tajali MLA 1 2023

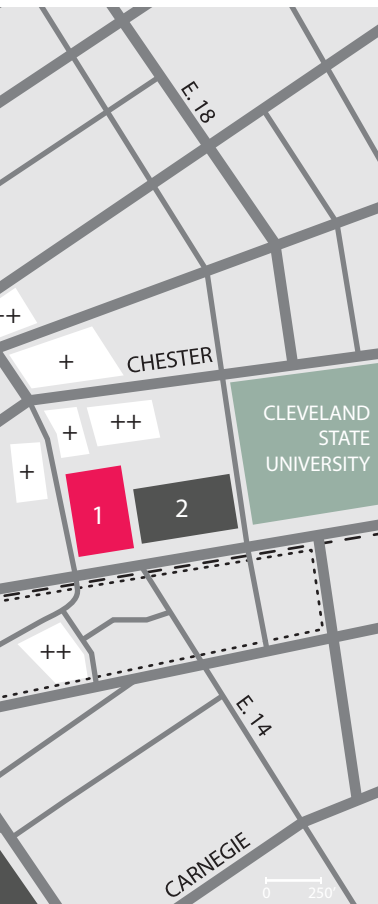
Saba is an international student, illustrator, and architect. Saba's interest in design is more toward cultural landscape and water-oriented designs. Her designs are more focused on the centrality of global warming and consequently the topics related to resilient and vernacular designs.

Saba has studied architectural engineering and holds a bachelor's degree in architecture and a master of science in landscape architecture. She is a candidate for the Master of Landscape Architecture at Kent State University.

MAP

DOWNTOWN CLEVELAND





## DESTINATIONS

1. Kent State Cleveland Studios
2. Playhouse Square
3. Heinen's Downtown Grocery Store
4. East 4th Shops and Restaurants
5. Quicken Loans Arena
6. Progressive Field

## RESOURCES

7. Cleveland Public Library
8. FedEx
9. AlphaGraphics

## PARKING

- + Surface Parking
- ++ Garage Parking

## FREE TROLLEY

- E line - - - - -
- C line . . . . .
- B line - - - - -





*CAED building, Kent, Ohio*



LANDSCAPE  
ARCHITECTURE  
KENT STATE

COLLEGE OF  
ARCHITECTURE &  
ENVIRONMENTAL  
DESIGN