

Regional Campus System



UPDATES



2023-24: Focus on Collaboration & Unity

- Collaboration is key to securing the health of the system
- RCs are essential components of the university's broader goals
- Conversations drive collaborative progress:
 - Faculty Think Tank
 - RC Leadership Group
 - Reimagining the Regionals

Results of Faculty Think Tank

- Results of the Ad Hoc Think Tank recently shared with campus Faculty Councils
- Proposal for faculty to engage with each other in disciplinary groups leveraging RC system data to recommend:
 - New or expanded programming
 - Course rotations and schedules
 - Opportunities to partner within and across disciplines to create microcredentials
 - Other initiatives supporting growth across the region



Find more information at www.kent.edu/regional-campuses/reimagined

Reimagineers' Work Continues

- As part of Reimagining the Regionals, Reimagineers have reconvened this fall
- Teams of faculty and staff across the system are working to:
 - Develop processes to initiate and nurture community and workforce partnerships
 - Create a systematic to vet new program ideas based on data and community needs
 - Increase CCP matriculation and create student profiles

New Program Process

Guide/Manual

- Looking first to expand existing opportunities
- New Ideas (Idea Bank)

Examples: Library/Media Specialist Tech, Lab Tech, Dental Tech....

President's Pledge to Regionals

- In the spring, President Diacon pledged \$1 million for high impact progress

The Regionals will use this money to impact enrollment and retention:

\$50,000	Staff professional development for recruiting and advising teams
\$50,000	Corporate relations to expand opportunities for new learners
\$150,000	Prior learning assessment tools and software
\$150,000	Initiating Earn & Learn Program
\$500,000	Belonging Champions Program
\$900,000	Total committed so far



Have an idea that benefits the system? Send ideas to Peggy Shadduck at mshaddu1@kent.edu.

Belonging Champions Spring 2024

- 80 champions across 7 Communities of Transformation
- Exclusive to regional system
- Open to anyone teaching a credit-bearing S24 course
- Stipends of up to \$1,000 depending on the role

Learn evidence-based, easy-lift practices to improve outcomes in your classes.

Be part of a supportive community of faculty from across the Regional System who work together to advance success for your students.

Opportunities to participate in summer 2024 projects that scale the Belonging Champions approach in select courses and programs (additional stipends).



"It has been great working with the Kent State Belonging Champions to transform how I teach! I learned how to make small changes that help welcome and support students by communicating belonging and in turn enhancing their ability."

~ Kay Amey, Fall 2023 Belonging Champion

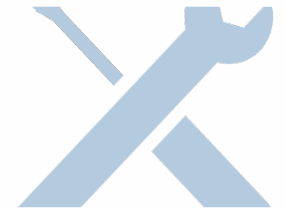
Why Join Belonging Champions?

- Evidence from pilots at 10+ colleges and universities has found it:
 - Significantly improves course grades and retention as well as reducing equity gaps in student outcomes
 - Provides an important source of support for faculty via learning together to use a set of easy-lift, high-impact classroom practices that improve the student experience



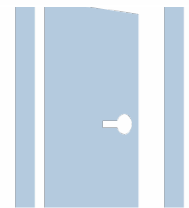
Understand the data,
context, system

Learn and use the tools



Work in community

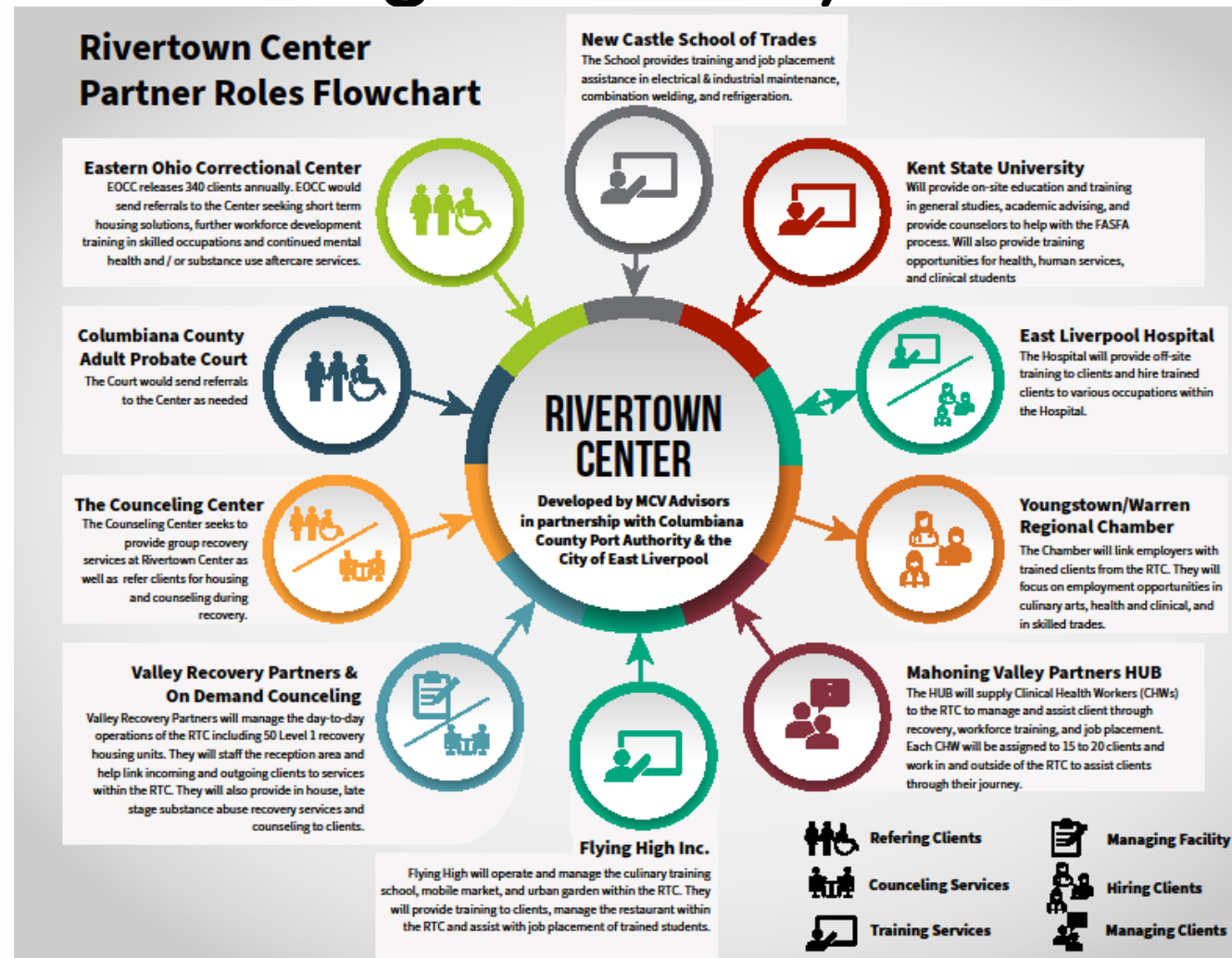
Share the word,
change the system



Campus Specific Updates



Expanding Workforce Partnerships (and Community Organizations)



Recent Partners Meeting



Banquet of Lisbon





Rising Scholars



Occupational Therapy Students



Regional Campus System



QUESTIONS

Peggy Shadduck, Ph.D.

mshaddu1@kent.edu

Brad Bielski, Ph.D.

bbielski@kent.edu

