

# University Accreditation Reaffirmation





# Outline

- Institutional Effectiveness overview
- Scope of institutional accreditation
- Accreditation expectations
- Areas of focus – Teaching & Learning
  - Criterion 3 – Quality, Resources and Support
  - Criterion 4 – Evaluation and Improvement
- Kent State's timeline
- Ongoing accreditation activities
- Upcoming site visit (April 14-15, 2025)

# Institutional Effectiveness



## Accreditation

Institutional accreditation  
Specialized accreditation



## Assessment

Assessment of student learning  
Survey administration



## Program Review

Facilitate reviews of academic program quality  
Coordination of site visits



## Institutional Research

Analysis and decision support  
Reporting



# Committees and groups

Advisory Committee for  
Academic Assessment  
(ACAA)

- <https://www.kent.edu/provost/aal/advisory-committee-academic-assessment-aca>

University Accreditation  
and Accountability  
Committee (UAAC)

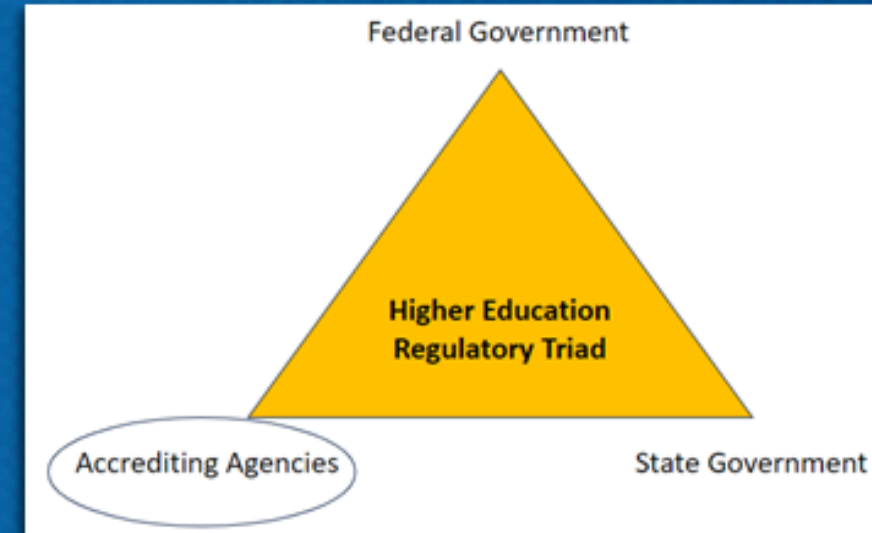
- <https://www.kent.edu/provost/aal/UAAC>

Assessment Support  
Group

- <https://www.kent.edu/provost/aal/assessment-support-group>

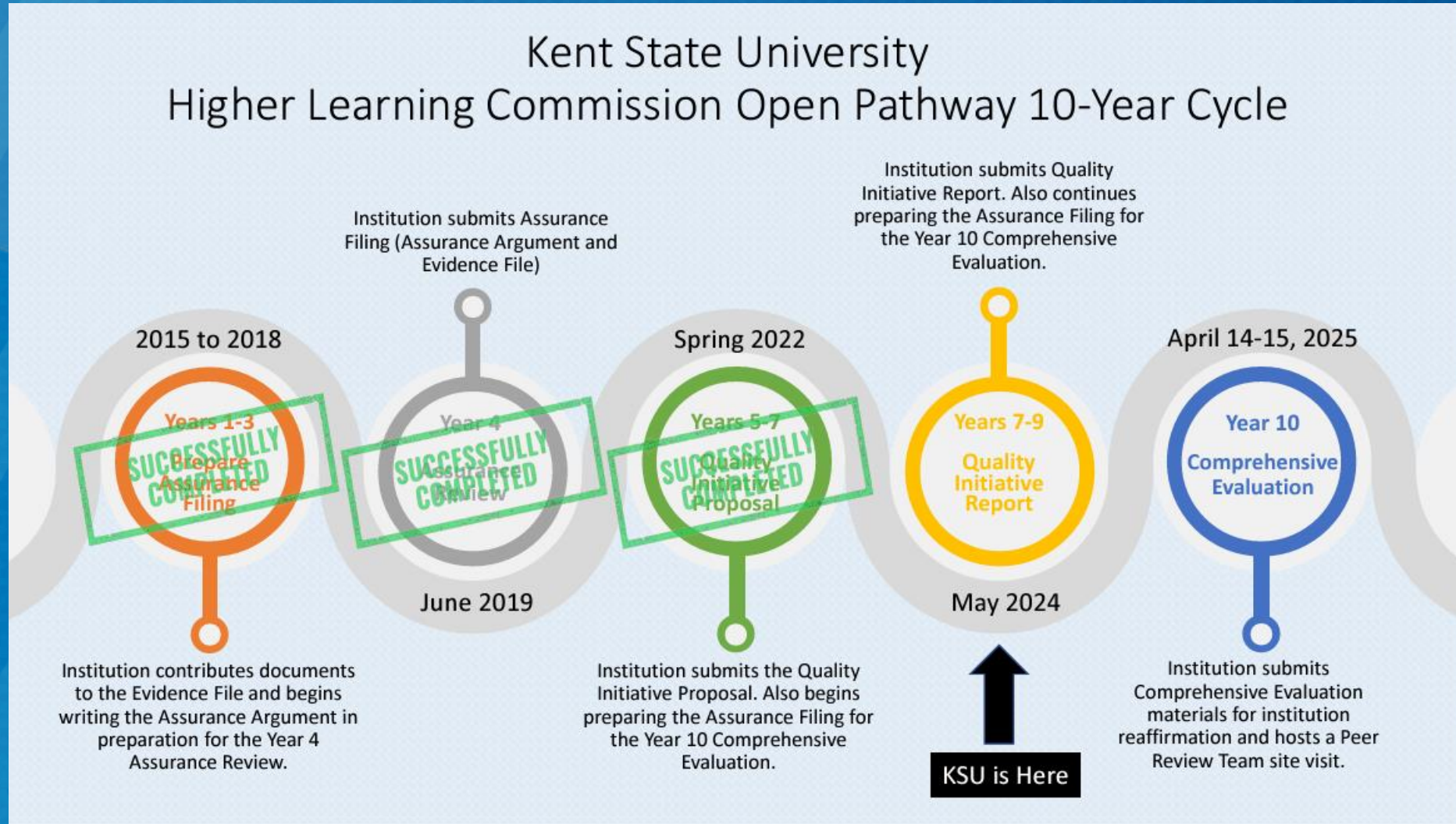
# Institutional accreditation

- Ten-year continuous improvement encompassing the entire institution
- Access to federal funding and financial aid for students
- Ability to transfer course credits
- Requirement for specific career fields
- Accountability and transparency
- Federal compliance





# Open Pathway timeline





# Accreditation expectations

## Institutional

processes to assure its own quality and provide evidence

on-site visit by a team of peer reviewers every 10 years to “reaffirm” status

positive standing with other accreditors

additional “Open Pathway” requirements

## Specialized / Programmatic

curriculum meets defined standards

evidence and data that the standards of the discipline are met

student pass rates, placement and metrics at required level

# Criteria for accreditation

1. Mission
2. Integrity: Ethical and responsible conduct
3. Teaching and learning: Quality, resources and support
4. Teaching and learning: Evaluation and improvement
5. Institutional effectiveness: Resources and planning



# Areas of focus – Teaching & Learning

## Quality, Resources and Support

Appropriate academic rigor and consistent quality

General education appropriate to mission with established framework

Qualified faculty and staff in sufficient numbers for programs who are regularly evaluated

Support for student learning and resources for effective teaching

## Evaluation and Improvement

A system of program review, evaluation of credit awarded, assurance of equivalent learning and appropriate accreditations to ensure quality

Effective assessment of student learning and use of results

Appropriate retention, persistence and completion goals with analysis of data to support decisions and improvement

# Ongoing accreditation activities

- **Institutional update** (each March/April) and **risk indicator review**
  - non-financial – basic institutional info, academic offerings, head counts, locations, campuses, [student achievement data website link](#)
  - financial – general info, data to calculate CFI
- **Accreditor adverse actions** (136 programs with 44 accreditors)
- **Complaints**
- **Substantive change requests**
  - [new programs](#), [locations](#), campuses
  - [program changes](#) (hours, length, content, delivery method, customized pathways)
- **Multi-location visits** (every 5 years)
- **Quality Initiative** report (June 1, 2024)
- **Student survey** (February 14, 2025)
- Assurance argument, **evidence**, **multi-campus** report, **Federal Compliance** (March 17, 2025)
- **Site visit** (April 14-15, 2025)
  - team of [peer reviewers](#)
  - report back on visit in 4-6 weeks
  - [decision process](#)
  - [public action](#)



# Ways to engage now

- Review the university's [accreditation website](#) to better understand the basics of accreditation
- Check the [reaffirmation website](#) for updates and educational materials
- Communicate with others in your college and across campus about accreditation
- Encourage your colleagues to participate in open forums during the site visit
- [Submit evidence](#) that will support the assurance argument



# What to expect during the site visit

- Multiple open forums, some focused on the criteria, at which you could potentially speak with the team
- A possible invitation to a focus meeting about a topic the team wants to know more about (e.g., budget model, program review, advising)
- A last-minute request from your ALO for a specific piece of information a reviewer wants to see (*please*) (*did I mention how awesome I think you are?*)



**See updates:** <https://www.kent.edu/kent/accreditation/2025-accreditation-reaffirmation>

**Ask questions:** [accreditation@kent.edu](mailto:accreditation@kent.edu)

**Send evidence:** <https://www.kent.edu/kent/accreditation/hlc-evidence-accreditation>



# Additional accreditation resources

- [The Leaflet](#)
- [HLC White Papers](#)
- [Guidelines on HLC Requirements](#)
- HLC Policies
  - [Criteria and Requirements](#)
  - [HLC Obligations](#)
  - [Compliance with Federal Regulation](#)
  - [Institutional Processes](#)