

Watermark (Taskstream AMS) Training - Mapping



Sarah Wu Ph.D.
Associate Director of Assessment
Office of Accreditation, Assessment and Learning

Contents of Presentation

- Outcomes Mapping
- Curriculum Map

Outcomes Mapping

- Mapping your participating area's outcomes to **institution-wide goal set, accreditation standard sets**, and outcome sets created in other participating areas demonstrates alignment with those sets.
- Entering these mappings in AMS makes the alignments visible to everyone with access to your participating area and allows your institution's AMS Coordinators to run alignment reports across the entire institution.

Curriculum Map

- A curriculum map is a visual tool that allows you to see the extent to which **courses/** activities align to a set of outcomes

Let's Learn How -Outcomes Mapping



Outcomes Mapping

1. Click the “Learning Outcomes” link (sidebar)
2. Click the “Check Out” button
3. Choose Map

Outcome	Mapping	
SLO 1 - Application Q	No Mapping	Map Edit Hide Delete
SLO 2 - Foundational and Theoretical Knowledge Q	No Mapping	Map Edit Hide Delete
SLO 3 - Research Skills Q	No Mapping	Map Edit Hide Delete

4. CREATE NEW MAPPING

Outcomes Mapping

5. Choose Goal sets distributed to [your participating area] from the drop-down menu. **Go**

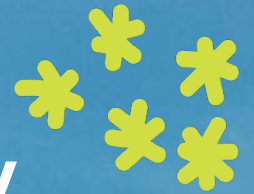
6. Select a set you would like to map your outcome.
CONTINUE

7. Check the box(es) next to the goals/standards/outcomes/etc. to which you would like to map your outcome. **CONTINUE**

Outcomes Mapping

8. If you need to remove a mapping, choose the **Map** link next to the desired outcome
9. Select the **Remove Mapping** to the right of the goal/standard

Let's Learn How -Curriculum Map



Curriculum Map

- A curriculum map is a visual tool that allows you to see the extent to which courses/ activities align to a set of outcomes

Curriculum Map

1. Click the “**Curriculum Map**” link (sidebar)
2. Click the “**Check Out**” button
3. Choose **Create New Curriculum Map**
4. Fill Information
5. Select a right Set
6. **OK** for opening map in a new window
7. **Edit map**

Curriculum Map

You should see your screen like this

MAP for demo

Courses and Activities Mapped to Social Media Studies Outcome Set (added 02/2018)

ACTIONS ▾

Show Outcome Descriptions Show Course/Activity Detail

Outcome		
SLO 1 – Application Students will be able to create and execute a social media campaign.	SLO 2 – Foundational and Theoretical Knowledge Students will be able to demonstrate foundational and theoretical knowledge of communication and social media.	SLO 3 – Research Skills Students will be able to write a research plan that includes a literature review, research and proposed methodology.
+ Courses and Learning Activities		
No courses/activities in this category. Use the 'Insert Course' quick link + to start adding courses in this category.		

8. Add courses

9. Fill course information, **CREATE**

10. Check courses that are aligned



Thank you!