

# College of Education, Health and Human Services Master's (Non-Thesis) and Ed.S Process Map

7/13/17

Start Program

Prior to the end of  
your second  
semester, you must...

File *Plan of Study* in Office of  
Graduate Student Services  
(418 WTH)

\*If you fail to complete this form,  
you will be prevented from  
registering for classes

By the first Friday of  
the semester in which  
you intend to  
graduate, you must...

Apply for Graduation

- Via Flashline
- Via Paper Form (OGSS)
- \$200 fee for late applications

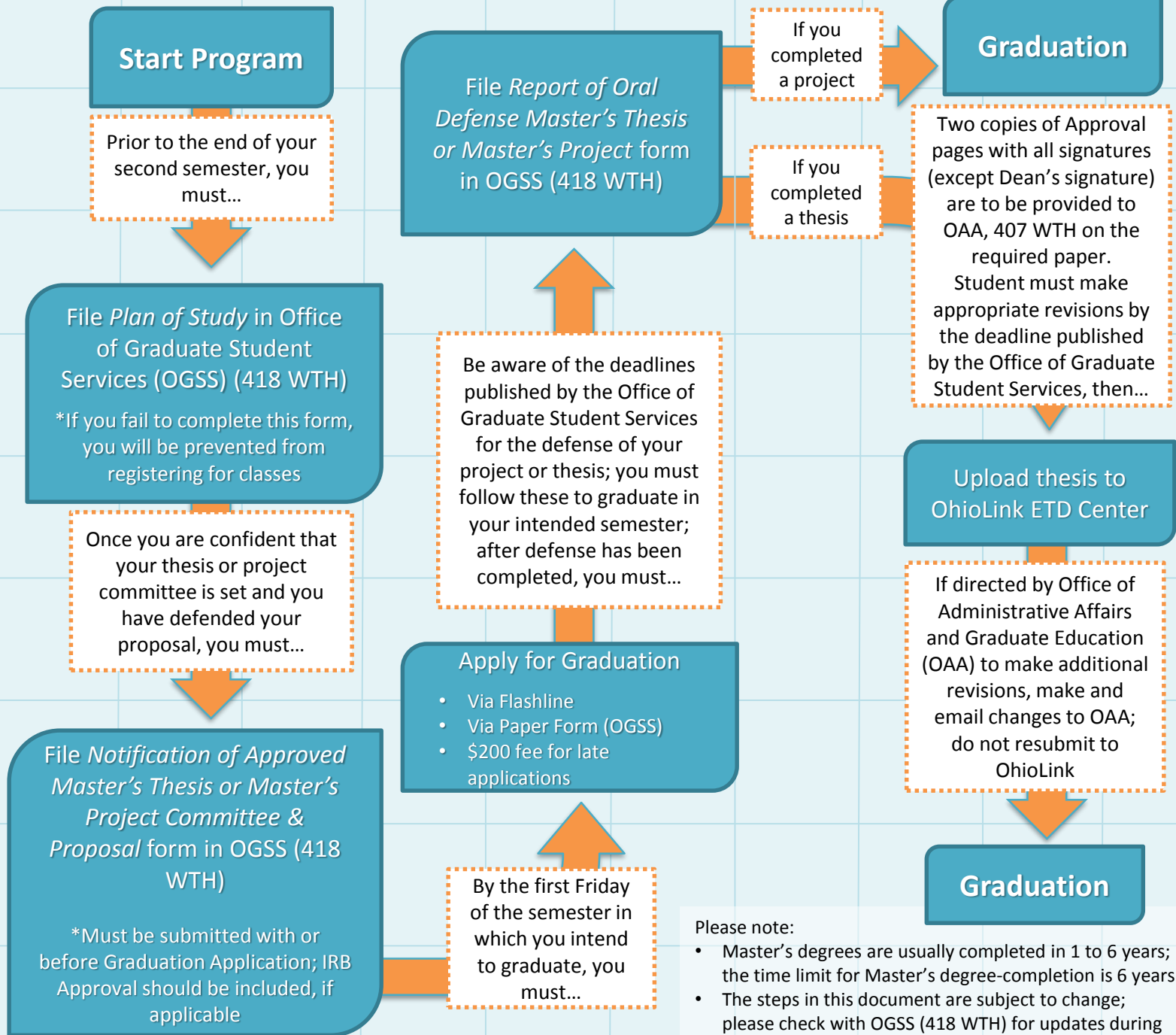
Please note:

- Master's degrees are usually completed in 1 to 6 years
- The following degree-completion time limits are in effect:
  - Master's Degree: 6 years
  - Ed.S. Degree: 5 years
- The steps in this document are subject to change; please check with OGSS (418 WTH) for updates during your program

Graduation

# College of Education, Health and Human Services Master's (with Thesis) Process Map

7/13/17



**Please note:**

- Master's degrees are usually completed in 1 to 6 years; the time limit for Master's degree-completion is 6 years
- The steps in this document are subject to change; please check with OGSS (418 WTH) for updates during your program